

420*285MM 可印刷三折页样式

210x285mm

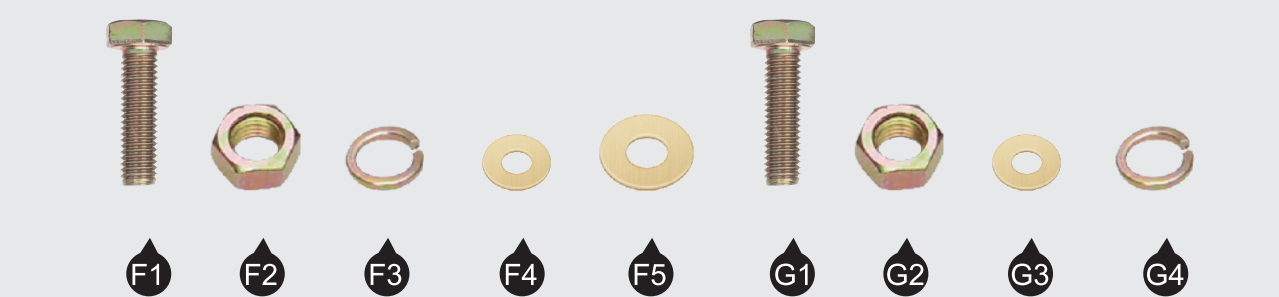
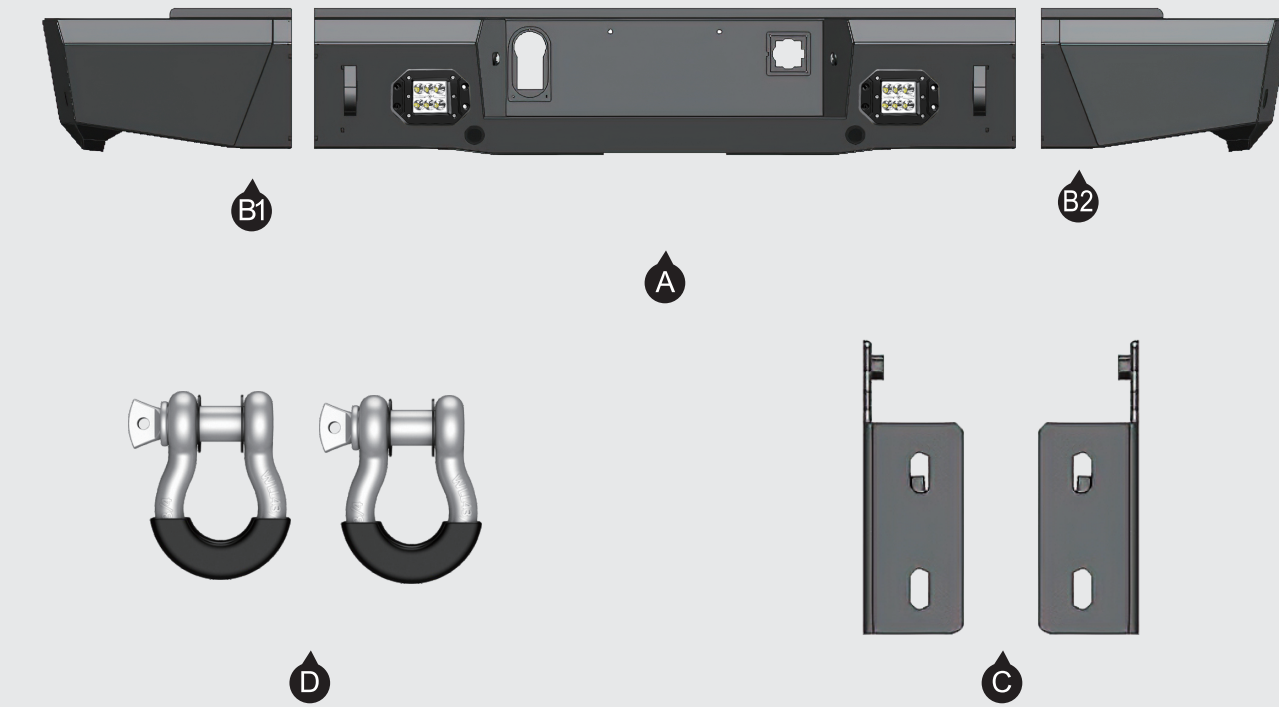
Pickup Truck Rear Bumper

For Chevy Silverado 1500/GMC Sierra 1500 2014-2018

Tools Required:

• 21mm socket • 13mm wrench • 15mm socket • 18mm deep socket • 19mm wrench

(1)Contents:



F1.M12*40 hex head bolt×6 F2.M12 hex head nut×4 F3.M12 split washer×6
F4.M12*30 flat washer×8 F5.M12*40 flat washer×2
G1.M10*30 hex head bolt×8 G2.M10 hex head nut×8 G3.M10*25 flat washer×16 G4.M10 split washer×8

210x285mm

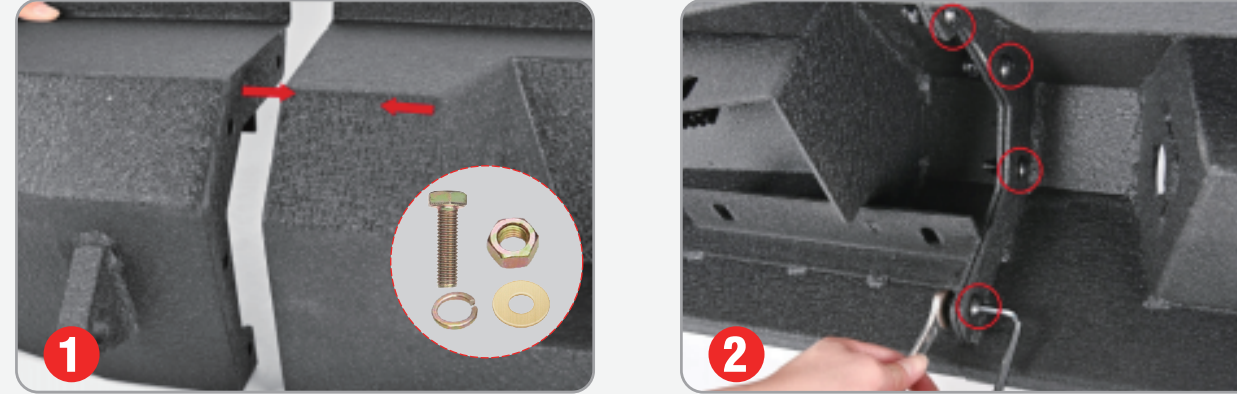
Notes

- The product parts in this instruction may differ slightly from the actual product contents but generally does not affect the installation of the product.
- Read this instruction carefully before starting installation.
- Proper tools will improve the quality of installation and reduce the time required.
- Please contact us if missing parts or any damage found.
- Installation takes approximately one hour, 2-3 people may be needed.

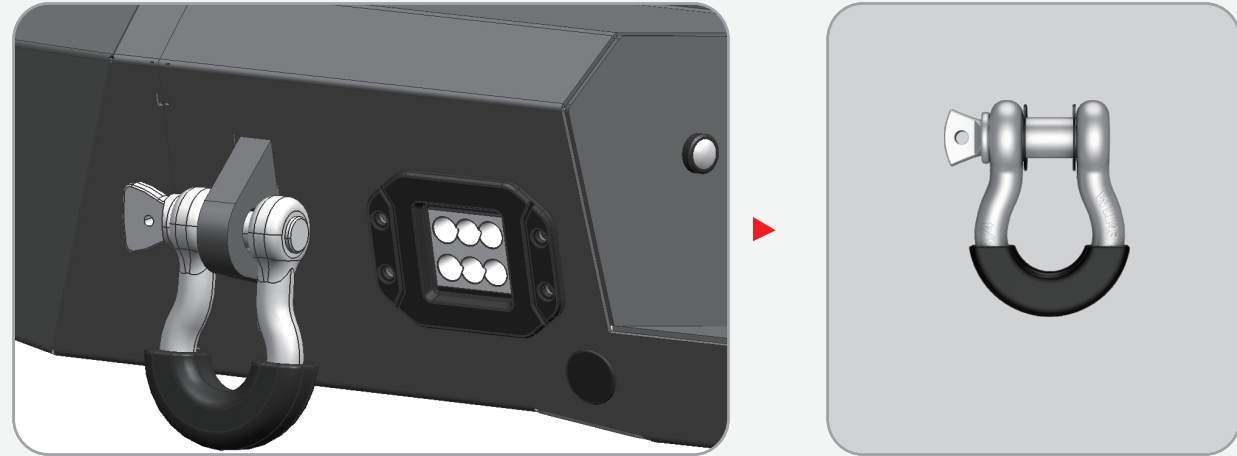
Installation Instruction:

1 Assemble the Bumper.

(1) Connect the part A and B1, B2, using with 8 G1&G2&G4, and 16 of G3.

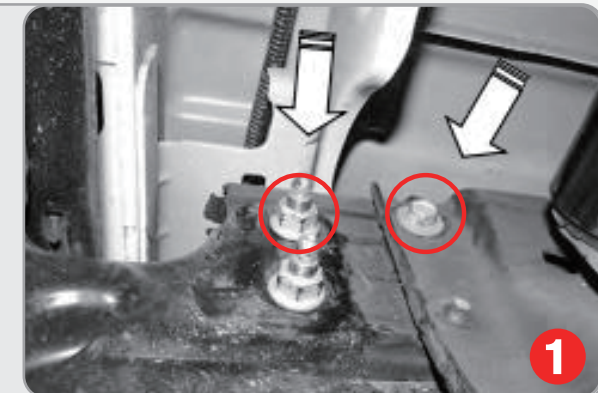


(2) Install the part D.



2 Factory Bumper Removal

(1) Remove bumper bolts circled above from outside of frame (arrows). Passenger side pictured from below.

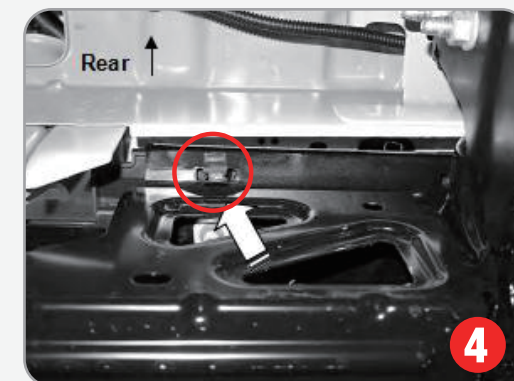
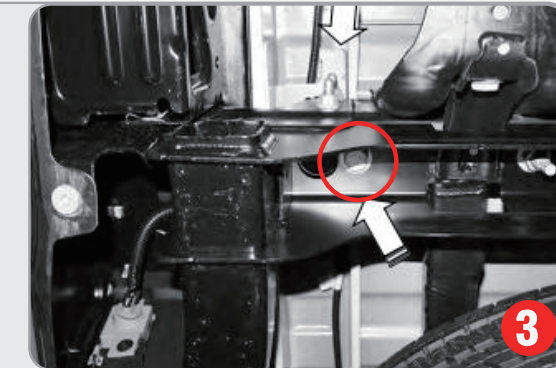


210x285mm

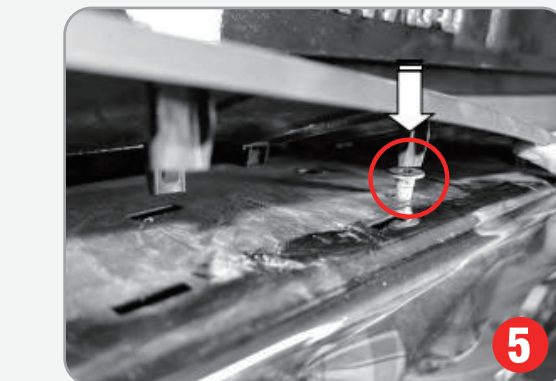
(2) Remove bumper bolt from bottom of frame (arrow). Back of passenger side of model w-o receiver hitch pictured from below.
Note: 2014-2016 models, remove rear bed to frame bolts, loosen center bolts, (if equipped). Do not loosen front bolts.



(3) Remove bumper bolts attaching brackets to frame (arrows). Model with receiver hitch pictured from below. **Note:** Before removing hardware, fully supported the weight of the bumper with blocks or stands to prevent injury or damage to the vehicle.



(4) Release clips to remove plastic bumper cover (arrow). Passenger side pictured from below. (OPTION 2014-2016 only)



(5) Remove bumper bolts attaching bumper to inner bracket. Remove outer bumper first, then remove inner brackets. (OPTION 2014-2016 only)



(6) End of frame once factory bumper is removed. Passenger side w-o receiver hitch pictured. **Note:** Before removing hardware, fully support the weight of the bumper with blocks or stands to prevent injury or damage to the vehicle.



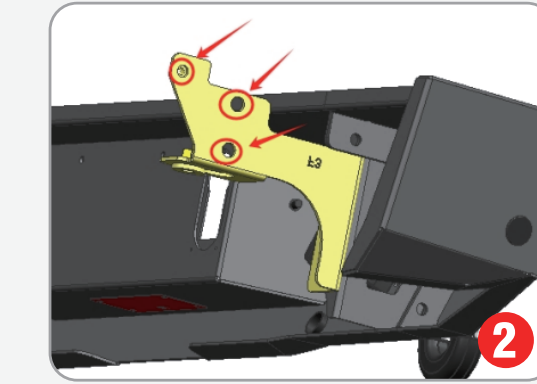
(7) End of frame once factory bumper is removed. Passenger side with receiver hitch pictured.

210x285mm

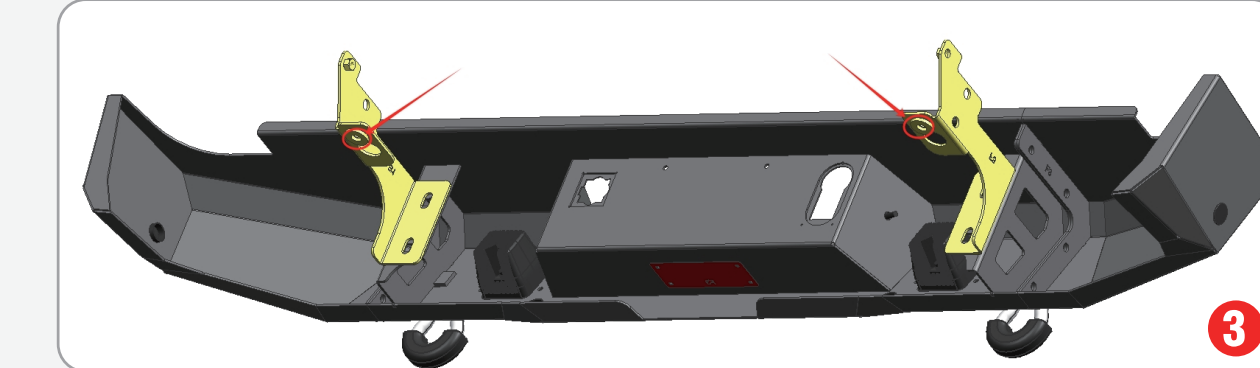
3 Installing Mounting Bracket



(1) Install mounting bracket (C) onto vehicle as shown



(2) Install factory hardware removed in step 2 through the holes in the mounting bracket (C) and through the holes in the frame

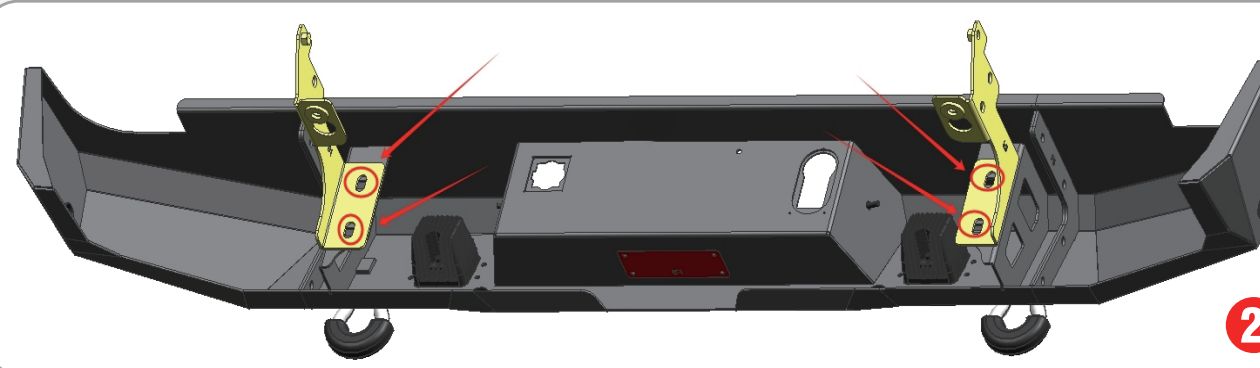


(3) Locate and place a supplied M12*40 hex head bolt (F1) with M12 split washer (F3) and M12*40 flat washer (F5) onto mounting bracket. Tighten down with socket.

4 Install the rear Bumper

(1) With help from an assistant place supplied rear bumper onto vehicle. Reinstall the hitch receiver locking clip onto harness. Line up bumper holes with mounting bracket holes.

(2) Locate and place a supplied M12*40 hex head bolt (F1) with M12 flat washer (F4) from behind mounting bracket holes and through the bumper holes. Start a supplied M12 hex head nut (F2) at the end of bolt. Tighten down with socket.



Enjoy Your New Nilight Bumper!

