

148X210mm

148X210mm

148X210mm

148X210mm

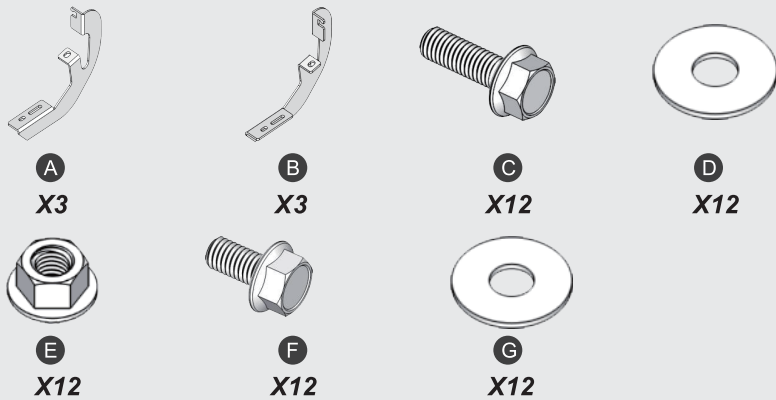


Slip-Proof Running Boards

For

- 2019-2023 Chevrolet Silverado 1500/2020-2023 Silverado 2500HD 3500HD Double Cab
- 2019-2023 GMC Sierra 1500/2020-2023 Sierra 2500HD 3500HD Double Cab

Part List



- A.X3 Driver Side Bracket
B.X3 Passenger Side Bracket
C.X12 M8 Hexagon Flange Bolt
D.X12 M8 Flat Washer
- E.X12 M8 Hexagon Flange Nut
F.X12 M8 Hexagon Flange Bolt
G.X12 M8 Flat Washer

Notes

- Read this instruction carefully before starting installation.
- Verify the direction of brackets before starting installation.
- Proper tools will improve the quality of installation and reduce the time required.
- If missing parts or any damage found,please take a picture, and contact us.

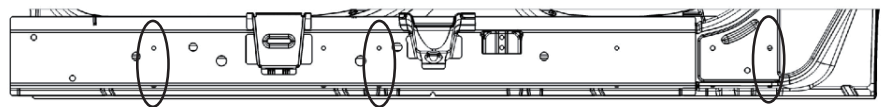
Installation Instruction

1 Step1

- (1) Locate(3)mounting positions each side.
- (2) Remove the rubber plugs on the inner rocker panel.

Note:

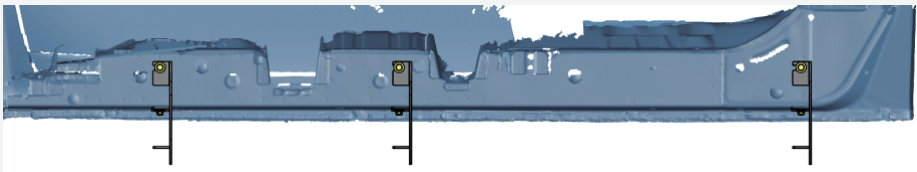
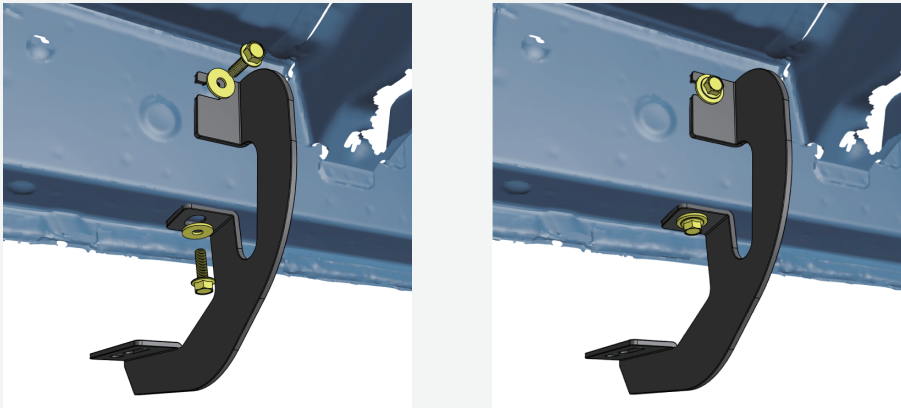
Some vehicles may equipped threaded inserts in rocker panel, use them directly in the step 2.



Front Passenger Side Double Cab

2 Step2

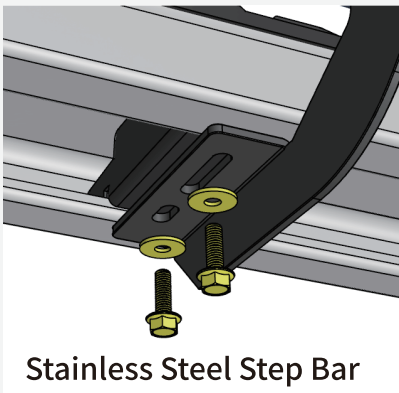
- (1) Attach the bracket to the inner rocker panel and secure with (2) M8 hex bolts,(2) M8 flat washers.
- (2) Repeat to install remaining brackets, do not fully tighten.



Front Passenger Side Double Cab

3 Step3

- (1) Remove (6) M8 hex bolts and (6) M8 flat washers from the step bar.
- (2) Slide mounting tracks to proper positions.
- (3) With assistance, lift and attach the step bar to brackets. Secure the step bar on brackets with (6) M8 hex bolts and (6) M8 flat washers.
- (4) Repeat to install the other side step bar,do not fully tighten.



Stainless Steel Step Bar



Front Passenger Side Double Cab

4 Step4

- (1) Tighten M8 hex bolts and nuts on vehicle with 15 ft-lbs. torque.
- (2) Adjust the step bar to level and tighten M8 hex bolts with 15 ft-lbs. torque.
- (3) After the step bar installed, periodic check to ensure all mounting hardware remains secure and tight.

Enjoy Your New Nlight Running Boards!



正面

背面