

420*285MM

210x285mm

210x285mm

210x285mm

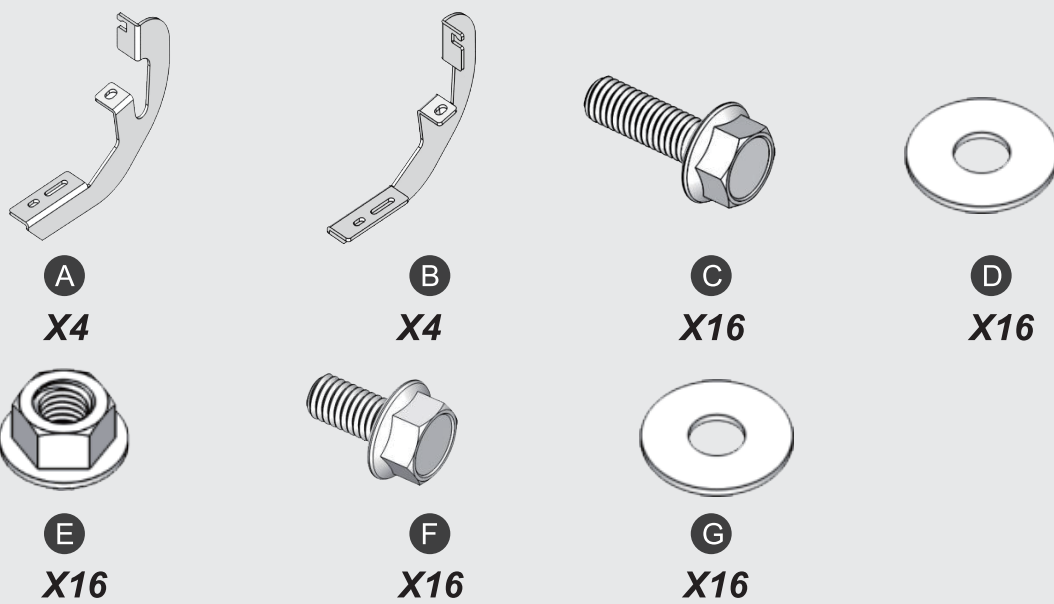
210x285mm



Slip-Proof Running Boards

- For 2019-2023 Chevrolet Silverado 1500 Crew Cab
- For 2020-2023 Silverado 2500HD 3500HD Crew Cab
- For 2019-2023 GMC Sierra 1500 Crew Cab
- For 2020-2023 Sierra 2500HD 3500HD Crew Cab

Tools Required



A.X4 Driver Side Bracket
B.X4 Passenger Side Bracket
C.X16 M8 Hexagon Flange Bolt
D.X16 M8 Flat Washer
E.X16 M8 Hexagon Flange Nut
(Pre-Install on Step Bar)
F.X16 M8 Hexagon Flange Bolt
G.X16 M8 Flat Washer

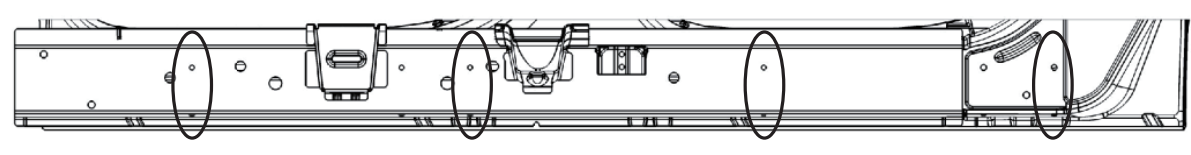
Notes

- Read this instruction carefully before starting installation.
- Verify the direction of brackets before starting installation.
- Proper tools will improve the quality of installation and reduce the time required.
- If missing parts or any damage found, please take a picture and contact us.

Installation Instruction

1 Step1

- (1) Locate (4) mounting positions each side.
- (2) Remove the rubber plugs on the inner rocker panel.



Front

Passenger Side Crew Cab

2 Step2

- (1) Attach the bracket to the inner rocker panel and secure with (2) M8 hex bolts, (2) M8 flat washers.
- (2) Repeat to install remaining brackets,do not fully tighten.

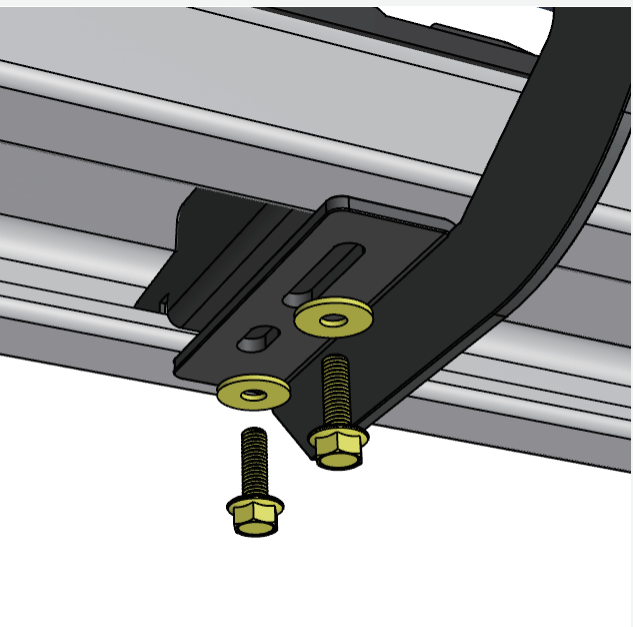


Front

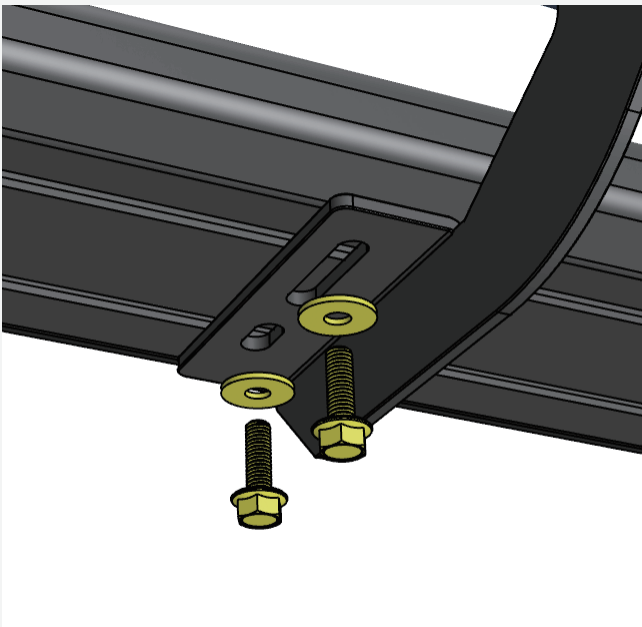
Passenger Side Crew Cab

3 Step3

- (1) Remove (8) M8 hex bolts and (8) M8 flat washers from the step bar.
- (2) Slide mounting tracks to proper positions.
- (3) With assistance, lift and attach the step bar to brackets. Secure the step bar on brackets with (8) M8 hex bolts and (8) M8 flat washers.
- (4) Repeat to install the other side step bar. do not fully tighten.



Stainless Steel Step Bar



Aluminum Alloy Step Bar



Front

Passenger Side Crew Cab

4 Step4

- (1) Tighten M8 hex bolts and nuts on vehicle with 15 ft-lbs. torque.
- (2) Adjust the step bar to level and tighten M8 hex bolts with 15 ft-lbs. torque.
- (3) After the step bar installed, periodic check to ensure all mounting hardware. remains secure and tight.

Enjoy Your new Nilight Running Boards !



正面

背面