

148X210mm

148X210mm

148X210mm

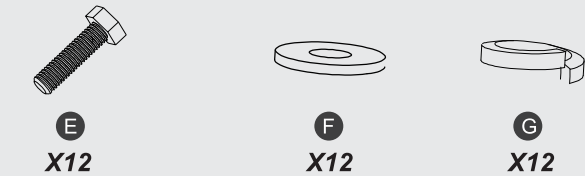
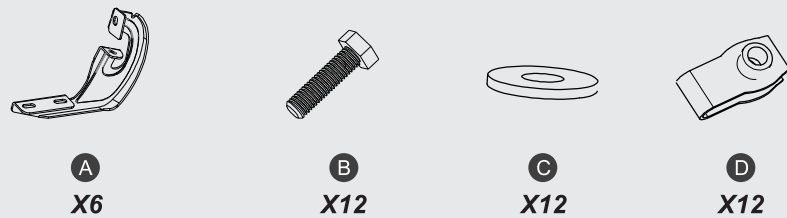
148X210mm



Slip-Proof Running Boards

For  
• 2004-2014 Ford F-150 Super Cab (3/4 Size Rear Doors)

Part List



A.X6 Mounting Bracket  
C.X12 M8 Flat Washer  
E.X12 M8 Hexagon Flange Bolt  
F.X12 M8 Flat Washer  
B.X12 M8 Hexagon Flange Bolt  
D.X12 M8 Clip Nut  
G.X12 M8 Lock Washer

Notes

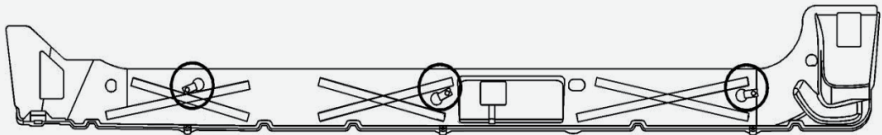
- Read this instruction carefully before starting installation.
- Verify the direction of brackets before starting installation.
- Proper tools will improve the quality of installation and reduce the time required.
- If missing parts or any damage found, please take a picture, and contact us.

Installation Instruction

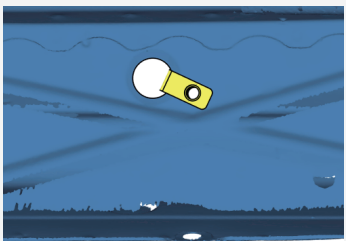
1

Step1

- ① Locate (3) mounting positions on the vehicle on each side.
- ② Remove the factory tape from the vehicle and clean any dirt around the mounting positions.



Front ← Passenger Right Side

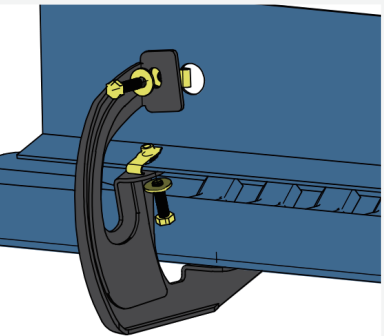
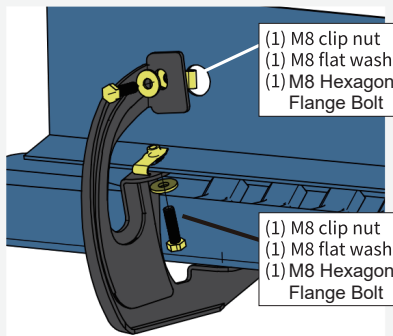


Insert M8 clip nuts onto the large hole and over the smaller hole next to it, with threads inside of the inner rocker panel.

2

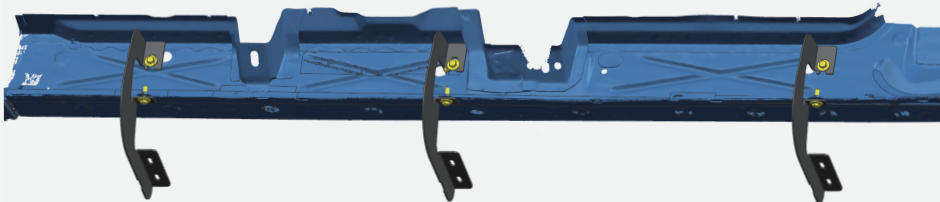
Step2

- ① Attach bracket to the rocker panel, (the vehicle front side first). Secure with (1) M8 hex bolt, (1) M8 flat washer, (1) M8 clip nut.
  - ② Secure the bracket to pinch weld with (1) M8 hex bolt, (1) M8 flat washer, (1) M8 clip nut.
- Repeat to install all brackets. Do not fully tighten.



Note:

For vehicle with factory threaded inserts and weld nuts, clean the rust and dirt around the threads before installation. Proper lubrication is required.

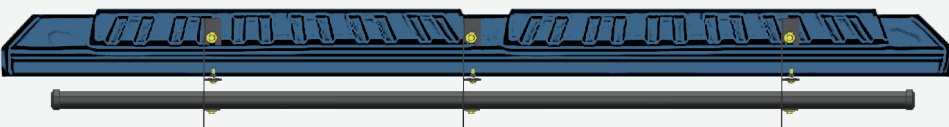
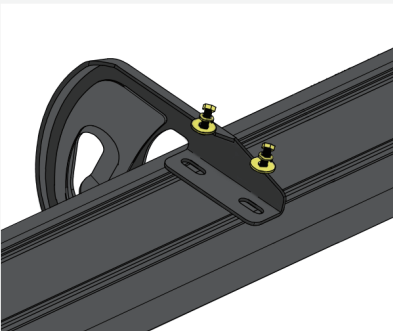
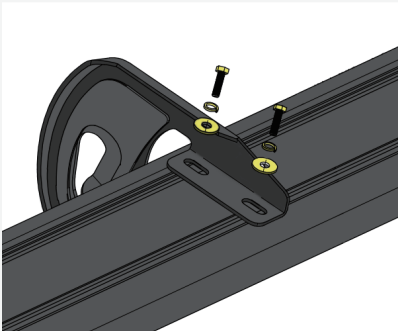


Front ← Passenger Right Side

3

Step3

- ① Remove (6) M8 hex bolts, (6) M8 lock washers and (6) M8 flat washers from the back of step bar.
- ② Slide mounting tracks to proper positions.
- ③ With assistance, lift and attach the step bar to brackets. Secure the step bar on brackets with (6) M8 hex bolts, (6) M8 lock washers and (6) M8 flat washers from the back of step bar.
- ④ Repeat to install the other side step bar. Do not fully tighten.



Front ← Passenger Right Side

4

Step4

- ① Tighten M8 hex nuts on vehicle with 15 ft-lbs. torque.
- ② Adjust the step bar to level and tighten M8 hex bolts with 15 ft-lbs. torque.



Notes:  
Periodic check to ensure all mounting hardware remains secure and tight.

Enjoy Your New Nilight Running Boards!



正面

背面