

420*285MM

210x285mm

210x285mm

210x285mm

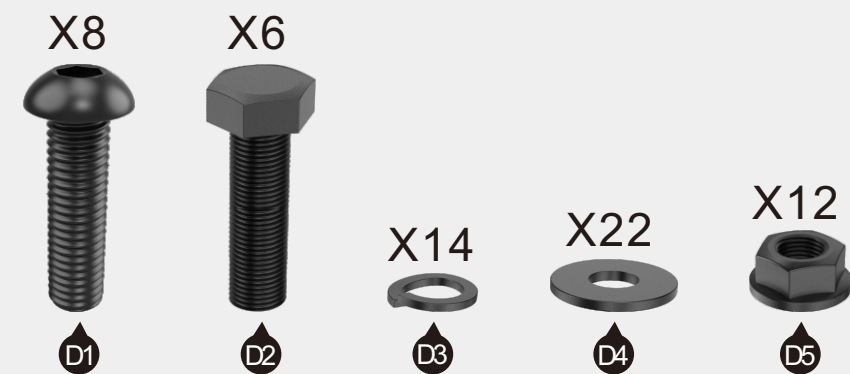
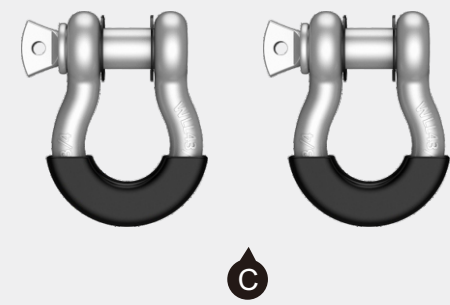
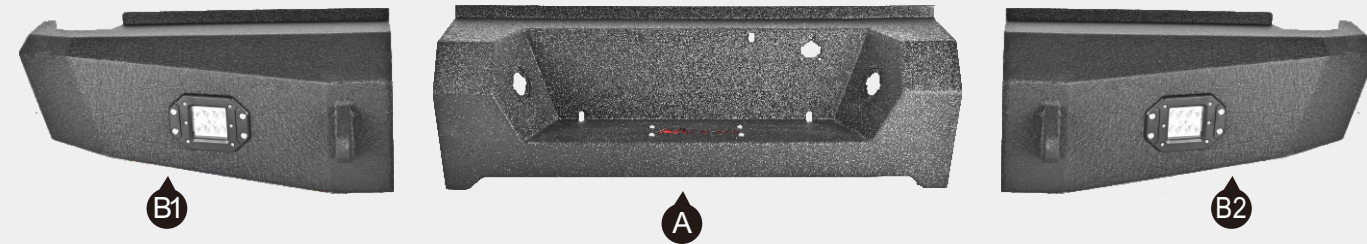
210x285mm



Pickup Truck Rear Bumper

For 2009-2014 Ford F150

(1)Contents:



Notes

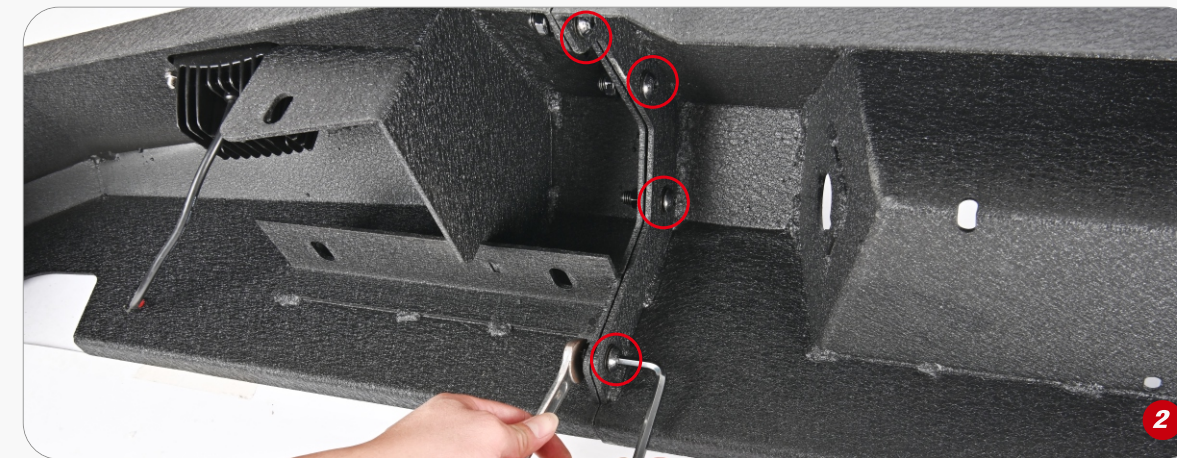
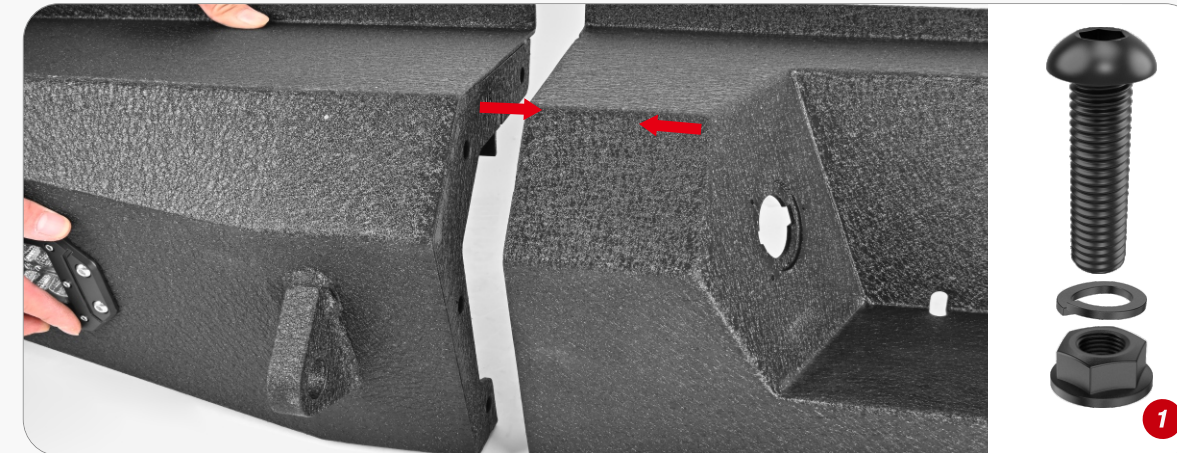
- Read this instruction carefully before starting installation.
- Proper tools will improve the quality of installation and reduce the time required.
- Please contact us if missing parts or any damage found.

(2)Installation time: About 1 hour, 2-3 people may be needed.

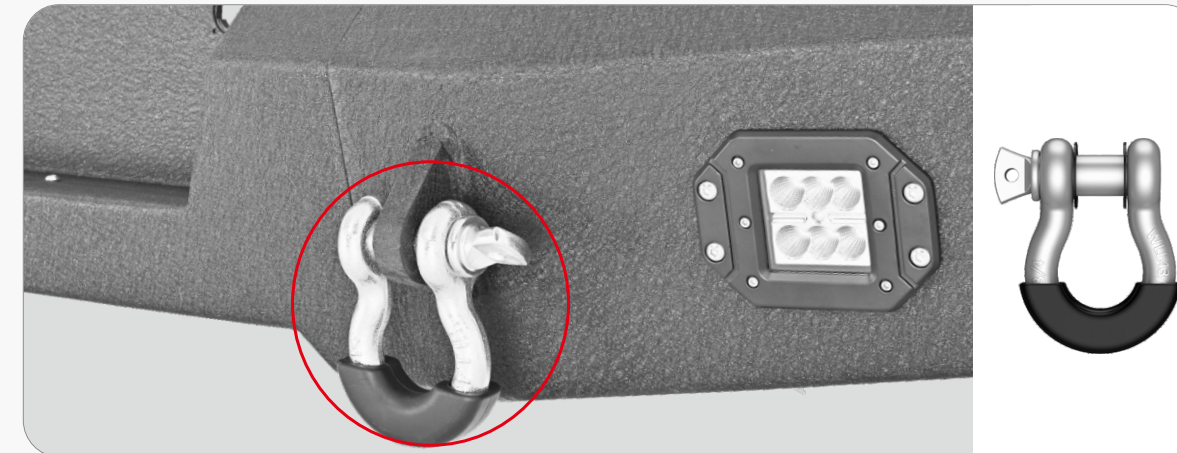
Installation Instruction

1 Step1 Assemble the bumper.

(1)Connect the PART A and B1, B2, using with 8 of D1, D3&D5, and 16 of PART D4.



(2)Install the PART C



2 Step2 Remove the factory bumper.

(1) Locate and disconnect the hitch receiver behind the bumper.



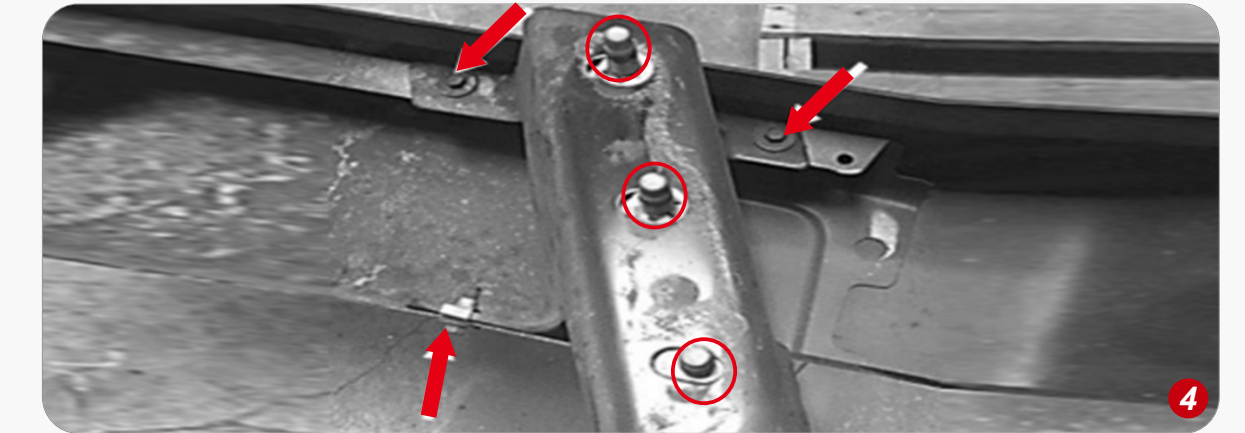
(2) Locate and disconnect the 2 license plate lights.



(3) Locate and remove the six 21mm nuts (3 per side) that are attaching the bumper / hitch assembly to the frame



(4) Move the bumper to a work bench or on a mat on the floor.

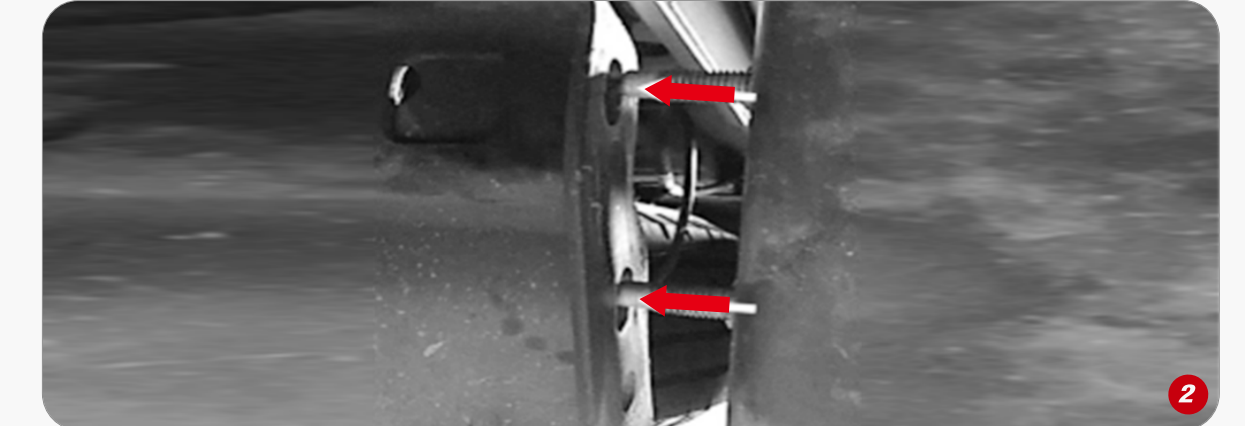


3 Step3 Install the new bumper.

(1) Using the OEM 10mm bolts that were removed from the OEM bumper attach the tow hitch assembly to the new bumper in the same way it was removed from the OEM one.



(2) Line up the bolts from the hitch to the holes located in the truck frame and attach bumper using OEM 21mm nuts from the removal process.



(3) Reconnect the tow hitch receiver and license plate lights to the new bumper.

