

NIGHT Installation Instructions

- 1** From directly center under the vehicle, locate and remove the (2) 16mm bolts supporting the center of the bumper.



- 2** Locate and remove the (3) 8mm screws securing the splash shield to the bumper. Remove splash shield.



- 3** Once the splash shields are removed, locate and remove the (2) 16mm bolts securing the splash shield brackets to the bumper. Bumper will now be loose.



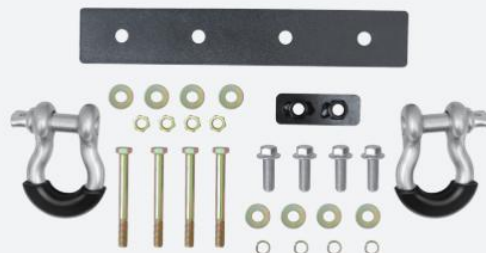
- 4** If equipped, remove the four 21 MM bolts holding the factory tow hook to the frame.



- 5** On the driverside, locate and unplug the wiring connector. Tilt up and remove the bumper from the vehicle.



- 6** You are ready to install the Night Rear Bumper using the following parts:



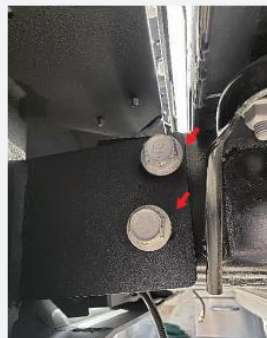
7

Insert the supplied dual nut plate into the passenger side frame rail.



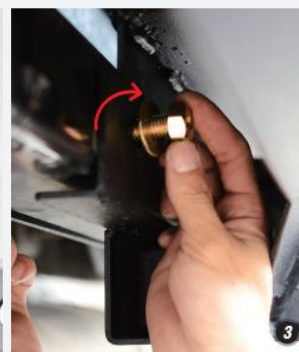
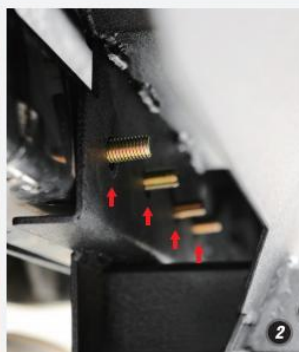
8

Raise the bumper against the frame rails & align the mounting holes. Loosely secure to the outer frame rails using the previously removed factory screws.



9

Next, install the metal mounting plate on the back side of the frame using the (4) long 18mm bolts and the corresponding washers.



10

Attach the included D-rings by unscrewing the clevis pin and fastening to the D-Ring mount on each side of the bumper.



Nilight Rear Bumper with LED Lights 2018+ JL

Tools Required:

Trim removal tool / Ratchet (1/4" and 1/2") / Sockets (8, 16 and 21 MM) / Wrench (18mm)



Enjoy Your new Nilight Bumper!

