



Wide Flat Front Fender Flares

For 2018-2024 Jeep Wrangler JL & Gladiator JT

Front Fender Flares Accessories List



L-A x1



L-B x1



C x2



R-A x1



R-B x1



D x2



E x2



F x2



wrench x1



M6*12 x22



M6*20 x28



M6 x22



M6 x32



M6x28



Rivet nut x22



M8*25 x2



M8 x2



M8x2



M8x2



M5*12 x4



M5 x4



Light bracket x2



Rubber Strip x2



Riveter x1

Rear Fender Flares Accessories List



L-A x1



R-A x1



M6*20 x24



M6 x24



M6 x24



Rubber Strip x2



wrench x1



Rivet nut x24



Riveter x1

Installation Instruction

Front Fender Flares

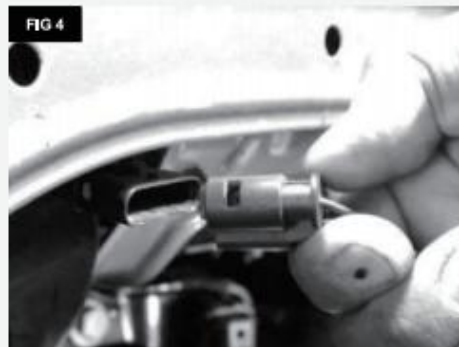
STEP 1: Front (Stock) Fender Flare Removal

(FIG1) Using a 7mm socket locate and remove 5 hex head bolt securing the factory flare into position.

(FIG2) Take hold of the front part of the flare and firmly pull up to release the hidden factory mounting clips as shown above.

(FIG3) Move to the center of the flare then rear of the flare pulling firmly up and back. You will hear a clicking sound as the clips are released. Repeat steps above for other side.

(FIG4) Disconnect turn signal harness by firmly pressing down on the Mate-n- lock plug.



STEP 2:

2-1: Install **Rivet Nut** in the corresponding holes on the car.

2-1-1: Insert the **rivet nut** into the mandre on the **riveter** and put into the hole. (Fig 5) (Fig 6)

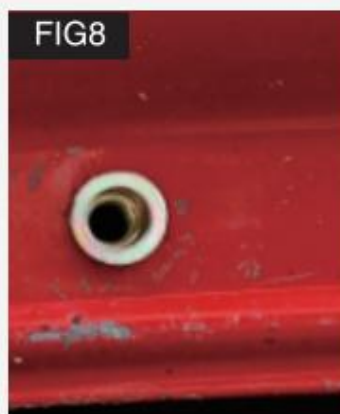
Installation location:



Accessories:



2-1-2: Rivet the **nut** into the place (until the **nut** is deformed). (Fig 7) (Fig 8)



Working principle of rivet nuts



2-2: Install the **rubber strip** on the front fender flare. (Fig 9) (Fig 10)

Installation location:

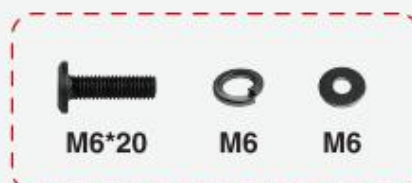


Accessories:



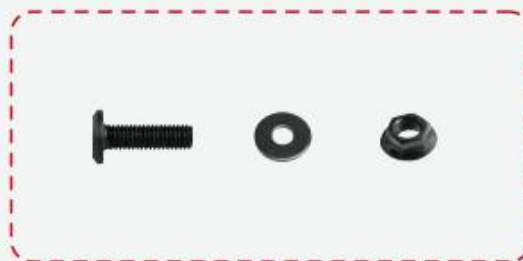
2-3: Install the **front fender flare** on the car, using **M6X20 screws**, **M6 rings** & **M6 washers**. Finally tighten all the screws with **wrench**.(Fig 11) (Fig 12)

Accessories:





2-4: Install with **M6X20 screws**, **M6 washers** and **M6 nuts**.(Fig 13)



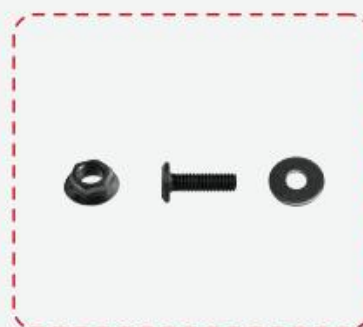
3-4: Assemble **R-A** and **R-B** with **M6X12**(Fig 14) (Fig 15) and **D** with **M6X20** (Fig 16) (Fig 17) **M6 washers** screws & **M6 nuts**.

Installation location:



Accessories:





2-6: Install **C** onto **R-A** with **M6*12** screws & **M6** nuts. (Fig 18) (Fig 19)

Installation location:



Accessories:

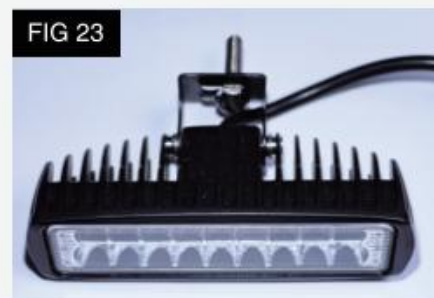
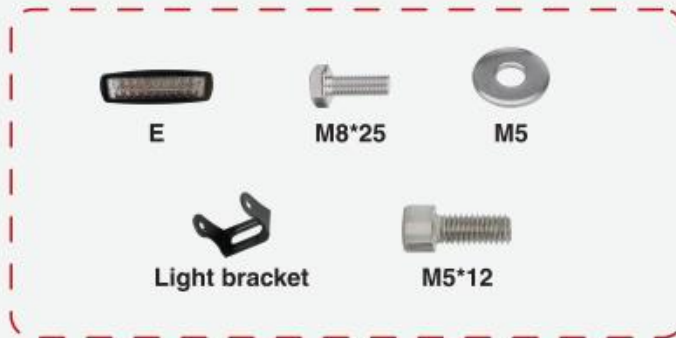


STEP 4: Install Driver Side Front Fender Flare

Note: Please check whether the light is working properly before installation.

4-1: Assemble the lamp with iwn screw package. (Fig 20-23)

Accessories:



4-2: Install the assembled lamp of **4-1** onto the main body of **2-6** and tighten the screws. (Fig 24) (Fig 25)



4-3: Connect the Switching interface of **F** to the vehicle wires. (Fig 26-29)

Accessories:





STEP 5: Install the passenger side fender in the same way.

2 *Rear Fender Flares*

STEP 1: Rear (Stock) Fender Flare Removal

Using a pry tool, remove all plastic retainer rivets.(Fig 1)(Fig 2)



2 *Rear Fender Flares*

STEP 1: Rear (Stock) Fender Flare Removal

Using a pry tool, remove all plastic retainer rivets.(Fig 1)(Fig 2)



STEP 2:

At either rear side, using even force and hands grasping the edge of the fender flares, pull directly away from the quarter panel. (Fig 3)

There will be tension from the clips and you will feel resistance until they release. Some clips may stay attached to the quarter panel. (Fig 4)

Remove any clips that stay attached to the quarter panel with a pry tool and reattach to the fender flare.



STEP 3: Assembling Driver Side Rear Fender Flare

3-1: Install the **rubber strip** on the rear fender flare. (Fig 5) (Fig 6)

Installation location:



Accessories:



3-2: Install **Rivet Nut** in the corresponding holes on the car.

3-2-1: Insert the **rivet nut** into the mandre on the **riveter** and put into the hole. (Fig 7) (Fig 8)

Installation location:



Accessories:

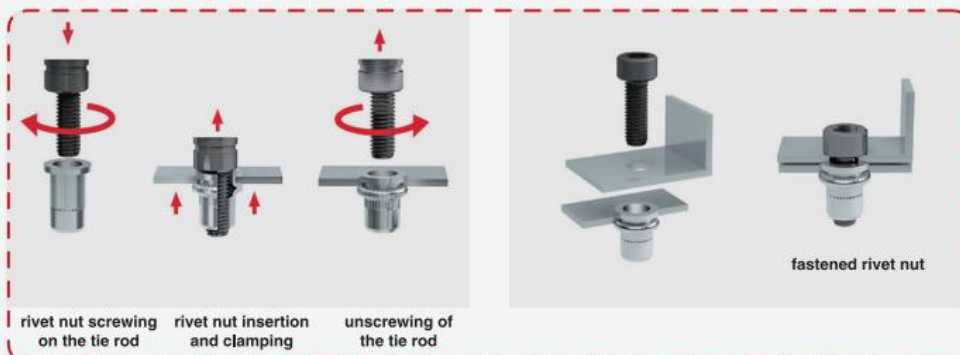




3-2-2: Rivet the **nut** into the place (until the **nut** is deformed). (Fig 9) (Fig 10)



Working principle of rivet nuts



3-3: Install the **rear fender flare** on the car, using **M6X20 screws**, **M6 rings** & **M6 washers**. Finally tighten all the screws with **wrench**. (Fig 11) (Fig 12)

Accessories:





STEP 4: Install the passenger side fender in the same way.

ALL Flares installation completed!

