

148\*210mm

148\*210mm

148\*210mm

148\*210mm

148\*210mm

148\*210mm

148\*210mm

148\*210mm

148\*210mm

148\*210mm

**MILIGHT Pickup Truck Rear Bumper**

For 2018-2024 Jeep Wrangler JL 2-Door & 4-Door

**Tools Required:**

- 21mm socket
- 19mm Wrench
- Ratchet
- 19mm socket
- 16mm Wrench
- Torque Wrench
- 16mm socket
- 10mm Wrench

(1)Contents:



- |                             |                                  |                        |
|-----------------------------|----------------------------------|------------------------|
| A. Bumper Body X1           | B. Carrier Rack X1               | C. Tailgate Bracket X1 |
| D. Carrier Mount Bracket X1 | E. Tire Carrier X1               | F. Stopper Column X1   |
| G. Camera Cover X1          | H. Nut Plat X1                   | I. D-Ring Shackle X2   |
| J. Lug Nut X3               | K. Connection Joint X1           | L. Rubber Cushion X4   |
| M. M.Axle Cap X1            | N. N.Bearing(Small and Large) X2 | O. O. License Plate X1 |



**Notes**

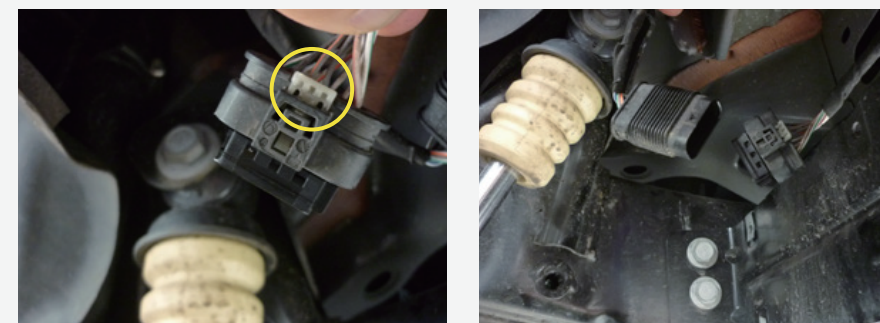
- Read this instruction carefully before starting installation.
- Proper tools will improve the quality of installation and reduce the time required.
- If missing parts or any damage found please take a picture, and contact us.

**Factory Bumper Removal:**

- 1** Remove the rear splash guard from wheel arch by removing the 3x8mm bolts. Repeat for both sides.



- 2** Locate the rear fog light wiring connector at the left-hand rear corner of the vehicle. Slide socket locking tab back and disconnect the plug.



- 3** Remove the outer bumper support bracket bolts.



- 4** Remove the two bolts from the centre of the rear cross member. Remove the lower rear hook.



- 5** Support the bumper. Remove the remaining two bolts from the outside of the chassis, lever the bumper brackets away from the chassis and remove the bumper.

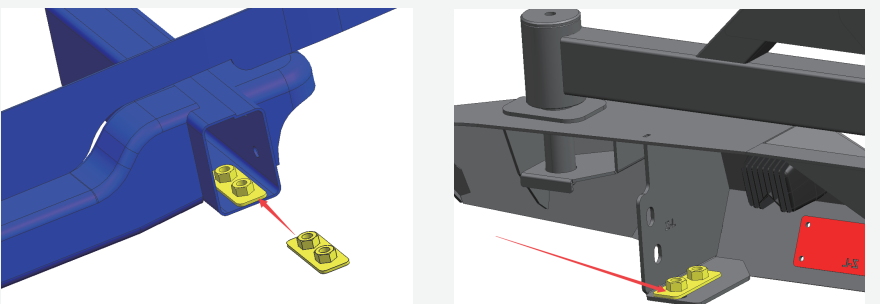


- 6** Remove the outer bumper support brackets from chassis.

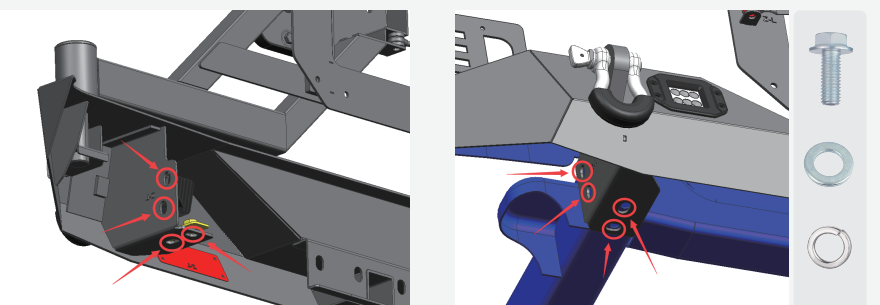


**Factory Bumper Removal:**

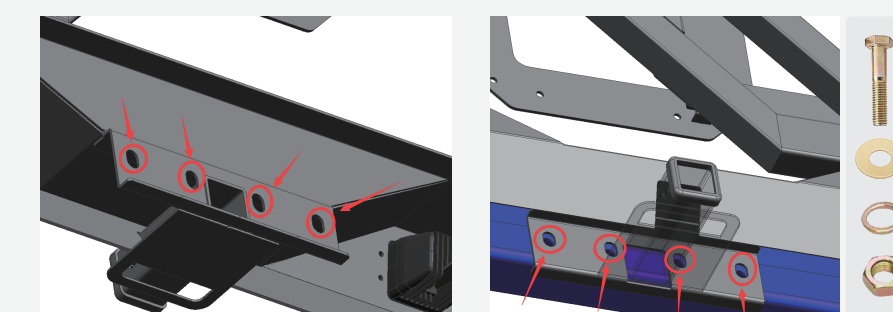
- 1** Take nut plate and place it into passenger side body frame rail. Guild the plate to align the weld nut with holes under the body frame rail.



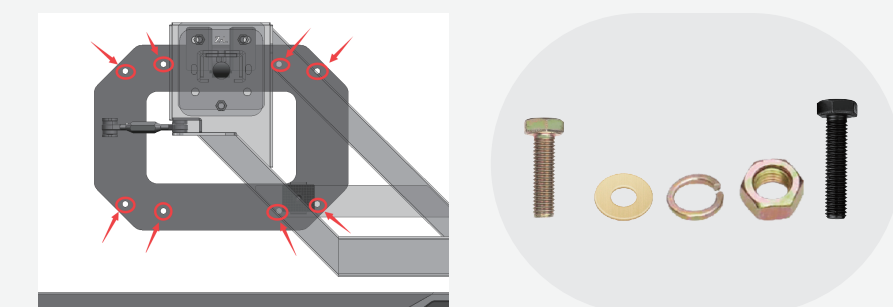
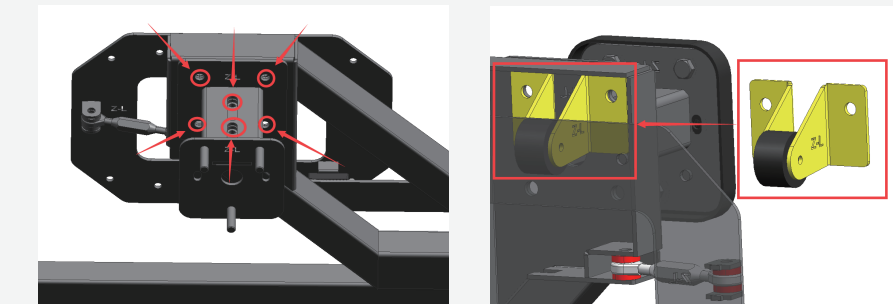
- 2** With assistance, lift and attach the bumper to frame rail. Secure with 4 M14x40 hex bolts, 4 M14x30 flat washers 4 M14 lock washers. Tighten M14 hex bolts with 75 ft.lbs.torque.



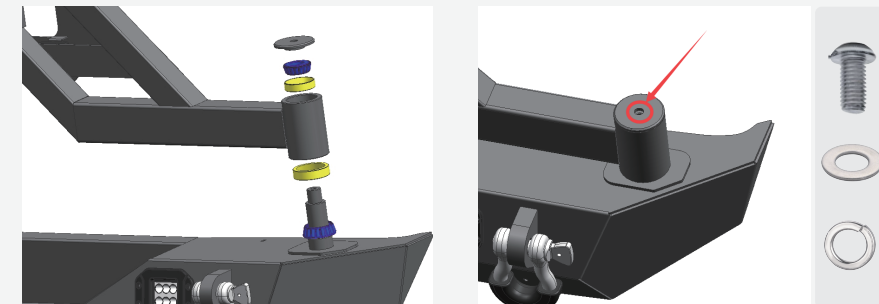
- 3** Attach the hitch spacer plate to the rear cross member. Secure the trailer hitch to rear cross member using 4 M12x110 hex bolts, 8 M12 flat washers, 4 M12 lock washers, 4 M12 hex nuts. Tighten M12 hardware with 60 ft.lbs.torque.



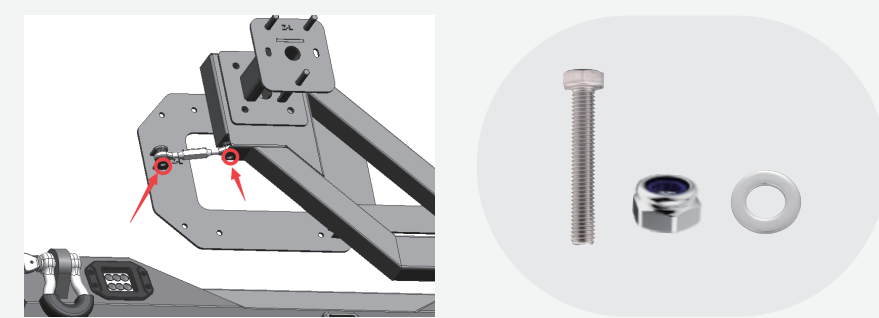
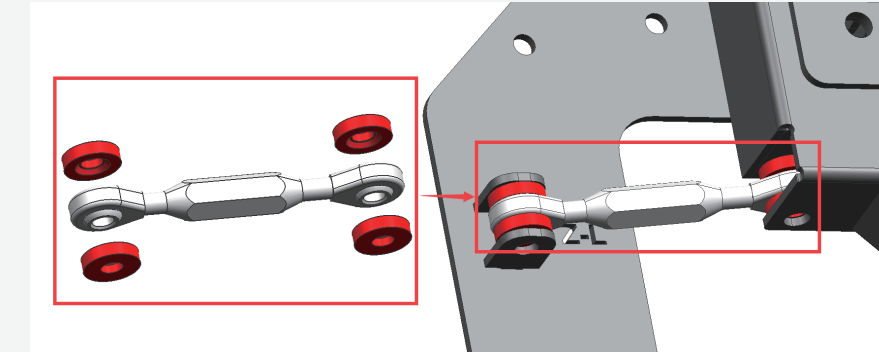
- 4** Attach the tailgate bracket to the tailgate and secure with 8 M8x25 hex bolts. Assemble the tire carrier rack with stopper column and carrier mount bracket using 4 M12x30 hex bolts, 8 M12 flat washers, 4 M12 lock washers, 4 M12 hex nuts. Tighten M12 bolts and nuts to 60 ft.lbs.torque.



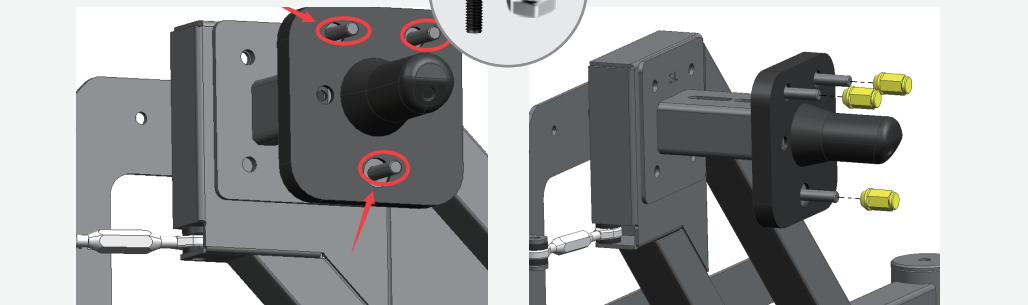
- 5** Position the bearings and tie carrier rack to the axle. Secure the tire carrier rack using 1 M10 button head bolt, 1 M10 flat washer and 1 M10 Lock washer.



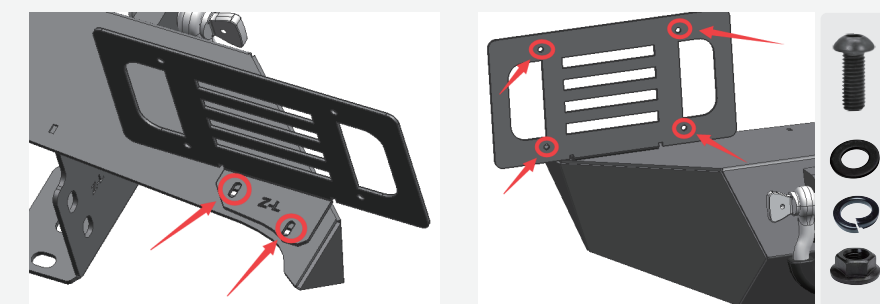
- 6** Assemble the connection joint and adjust to proper length. Install the connection joint to the tailgate bracket and carrier rack using 4 rubber cushions, 2 M8x50 hex bolts, 2 M8 flat washers, 2 M8 lock nuts. Tighten the center nut of the connection joint.



- 7** Position the tire carrier to the carrier rack and secure with 2 M12x30 hex bolts, 2 M12 flat washers. Position the rear view camera to the tire carrier. Secure the rear view camera with the camera cover, 2 M8 hex bolts, 2 M8 nylon lock nuts. Take the spare tire and place it onto tire carrier. Secure with 3 lug nuts.



- 8** Fix the license plate holder to the bumper and secure it with 2 M6x25 Button Head Bolt, 4 M6x16 Flat Washer, 2 M6 Lock Washer, 2 M6 Flange Nut. Reserve 4 holes(Reserve 4 M6x25 Button Head Bolt, 8 M6x16 Flat Washer, 4 M6 Lock Washer, 4 M6 Flange Nut) on the license plate frame to connect the license plate.



The pictures may not match the actual product a bit, but the installation steps are the same.

**Enjoy Your New Nilight Bumper!**

