

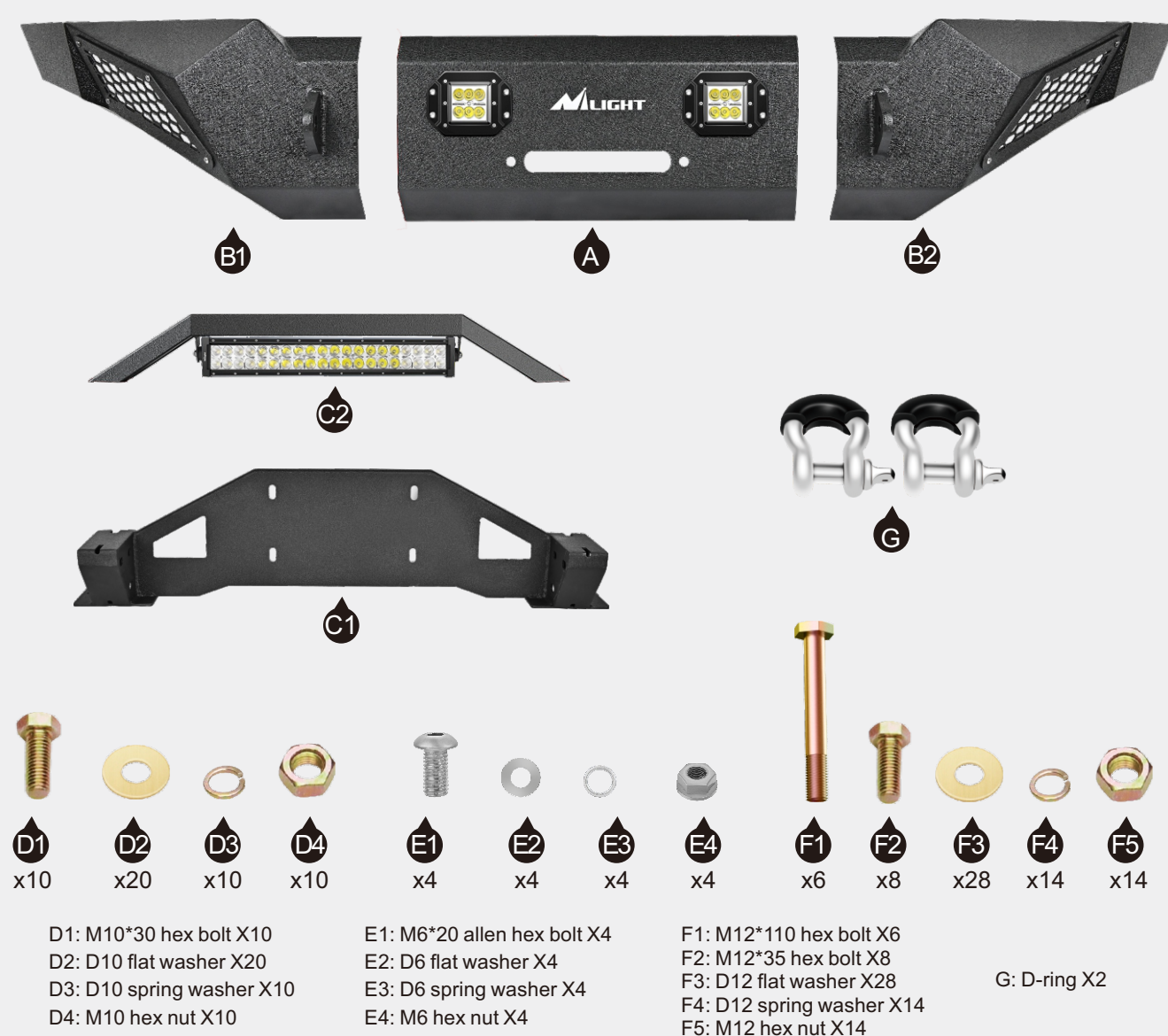


Pickup Truck Front Bumper

For 2005-2015 Toyota Tacoma

Tools Required

- M6 Allen Wrench
- 18mm Socket
- 16mm Socket
- Torque Wrench



Notes

- Read this instruction carefully before starting installation.
- Proper tools will improve the quality of installation and reduce the time required.
- Please contact us if missing parts or any damage found.

Installation Instruction

1

Step1

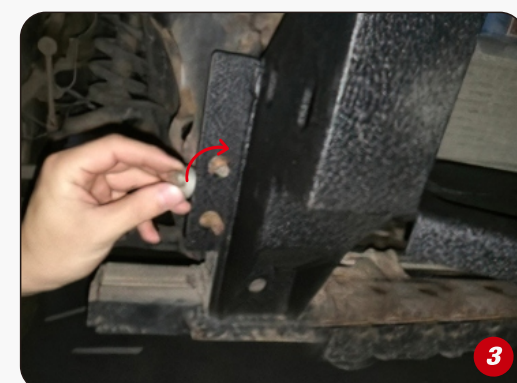
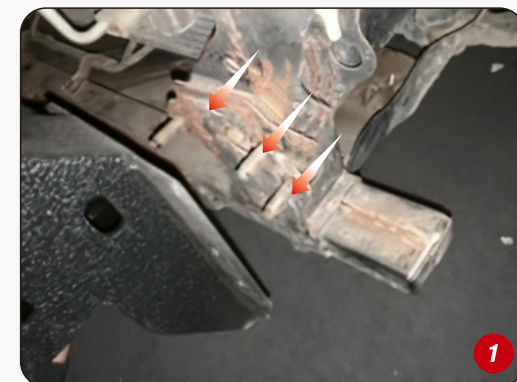
Begin the installation by removing the original bumper.



2

Step2

Install the "PART C1" into the car frame and tighten up it with 8 of "PART F2", 16 of "PART F3", 8 of "PART F4", 8 of "PART F5".



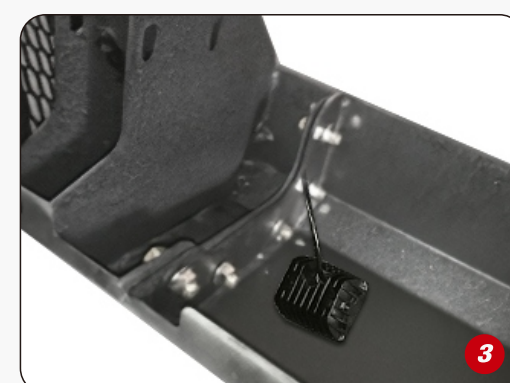
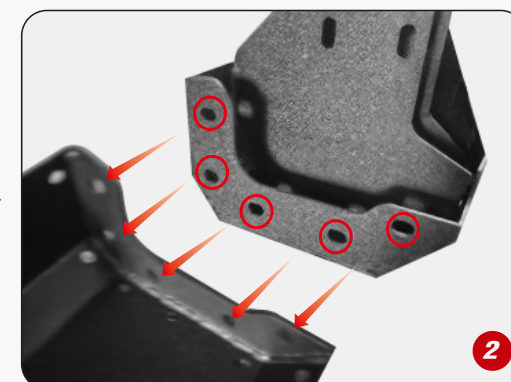
3

Step2

Assemble the bumper

(1) Connect the "PART A" with "PART B1" and "PART B2", using 10 of "PART D1", 20 of "PART D2", 10 of "PART D3", 10 of "PART D4". (Don't tighten the screws until all the accessories are installed, and the PART A, B1&B2 are aligned with each other)

420*285mm



(2) Install the "PART C2" on the bumper, using 4 of "PART E1", 4 of "PART E2", 4 of "PART E3", 4 of "PART E4"



4

Step4

Install the bumper into the frame, using 6 of "PART F1", 12 of "PART F3", 6 of "PART F4", 6 of "PART F5"



5

Step5

Install the 2 "PART G" on the bumper.



Enjoy Your New Nilight Bumper!

