

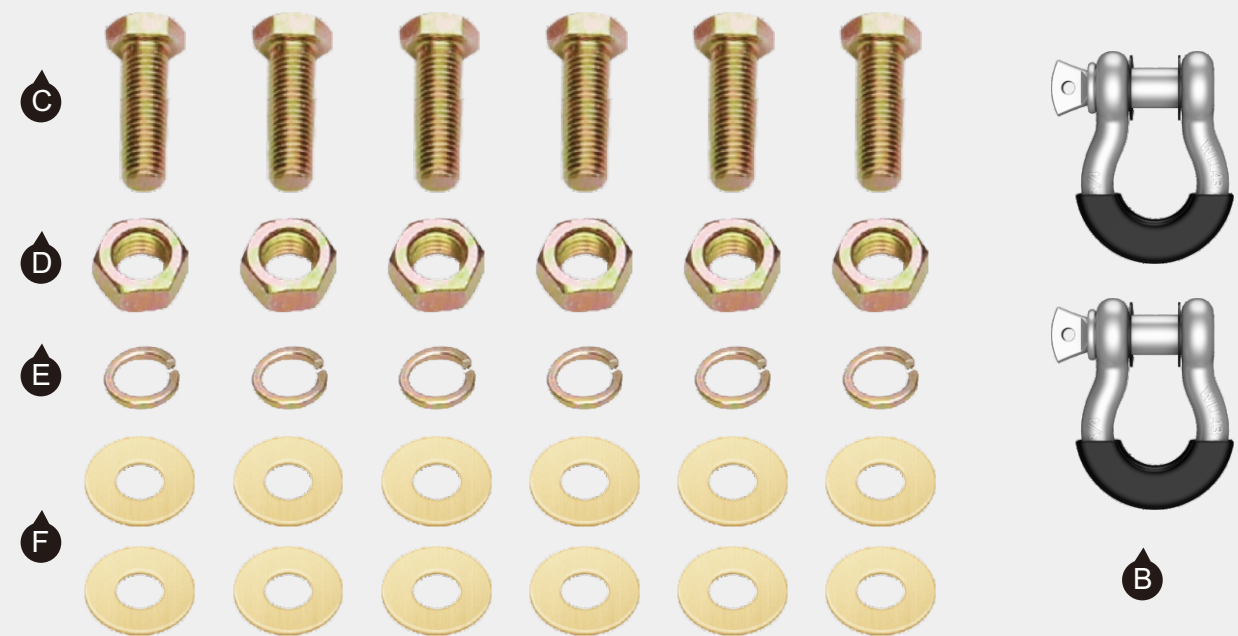


Pickup Truck Rear Bumper

For 2005-2015 Toyota Tacoma

Tools Required • 19mm Socket • 19mm Torque Wrench

(1)Contents:



Notes

- Read this instruction carefully before starting installation.
- Proper tools will improve the quality of installation and reduce the time required.
- Please contact us if missing parts or any damage found.

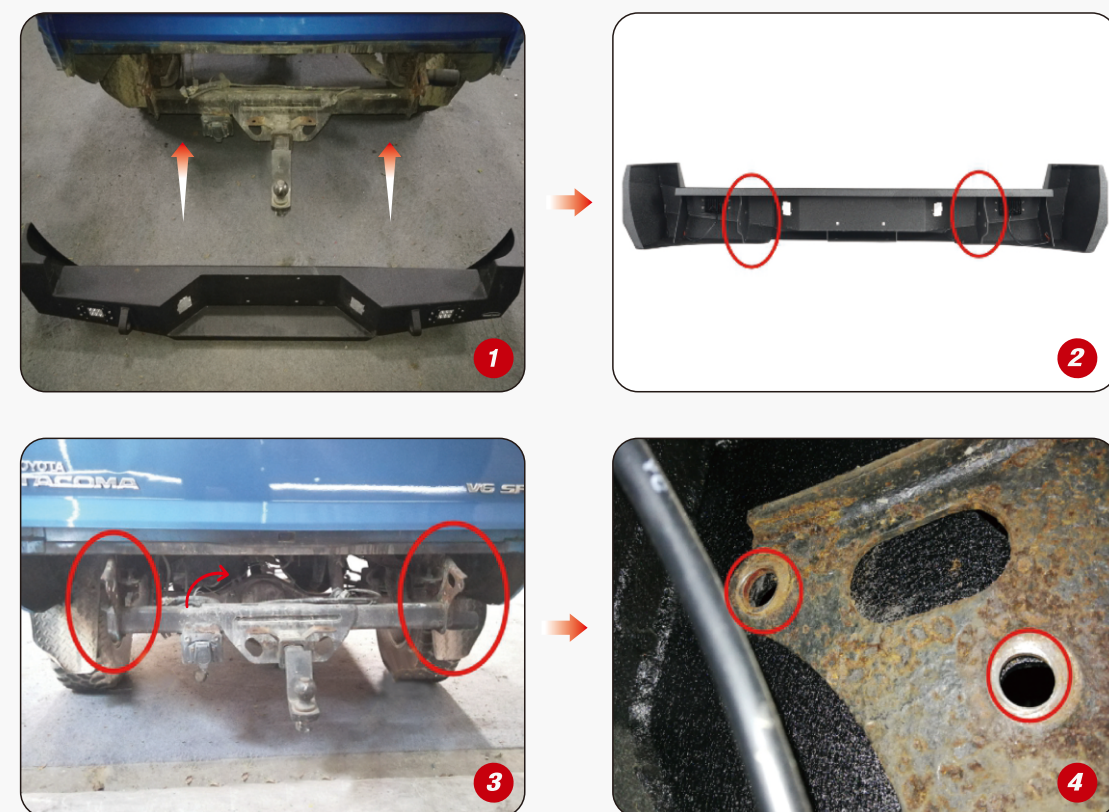
(2)Installation time: About 1 hour, 2-3 people may be needed.

Installation Instruction

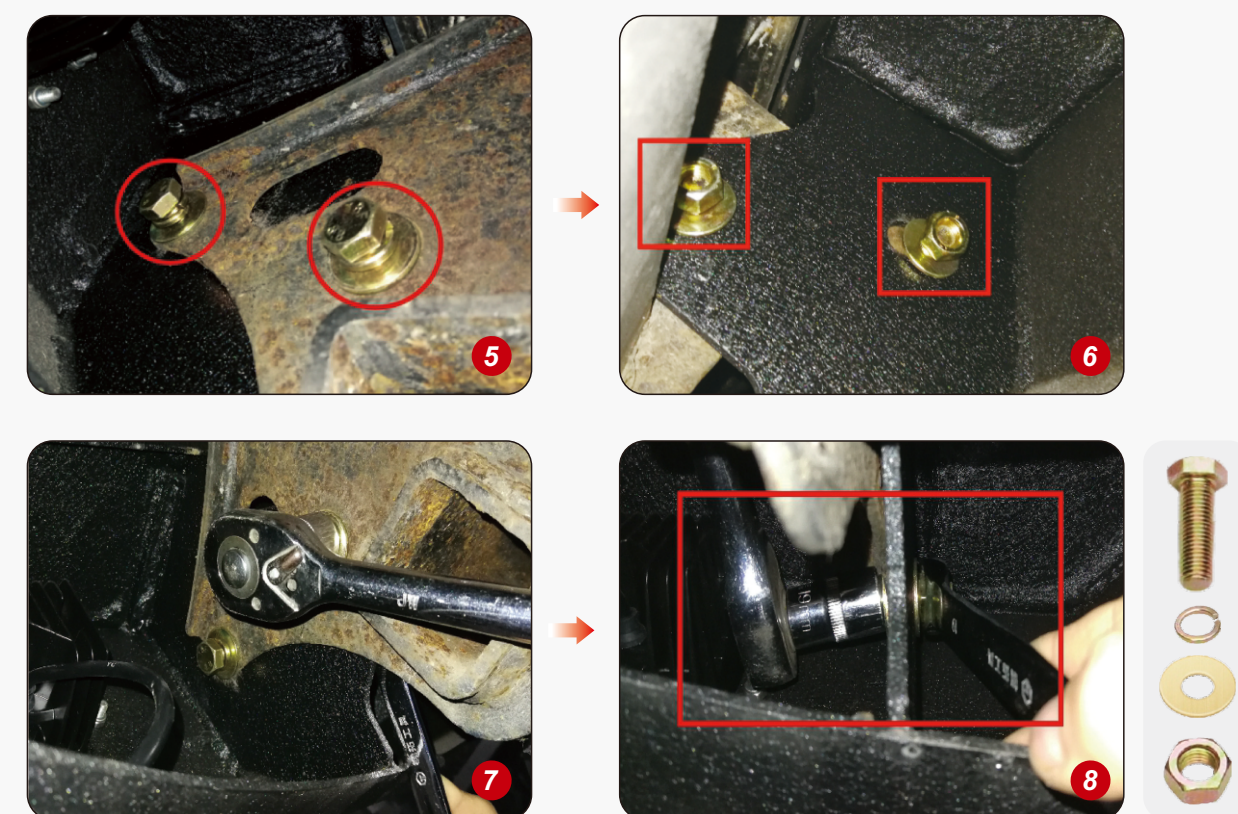
1 Step1
Remove the original rear bumper. And then as shown below.



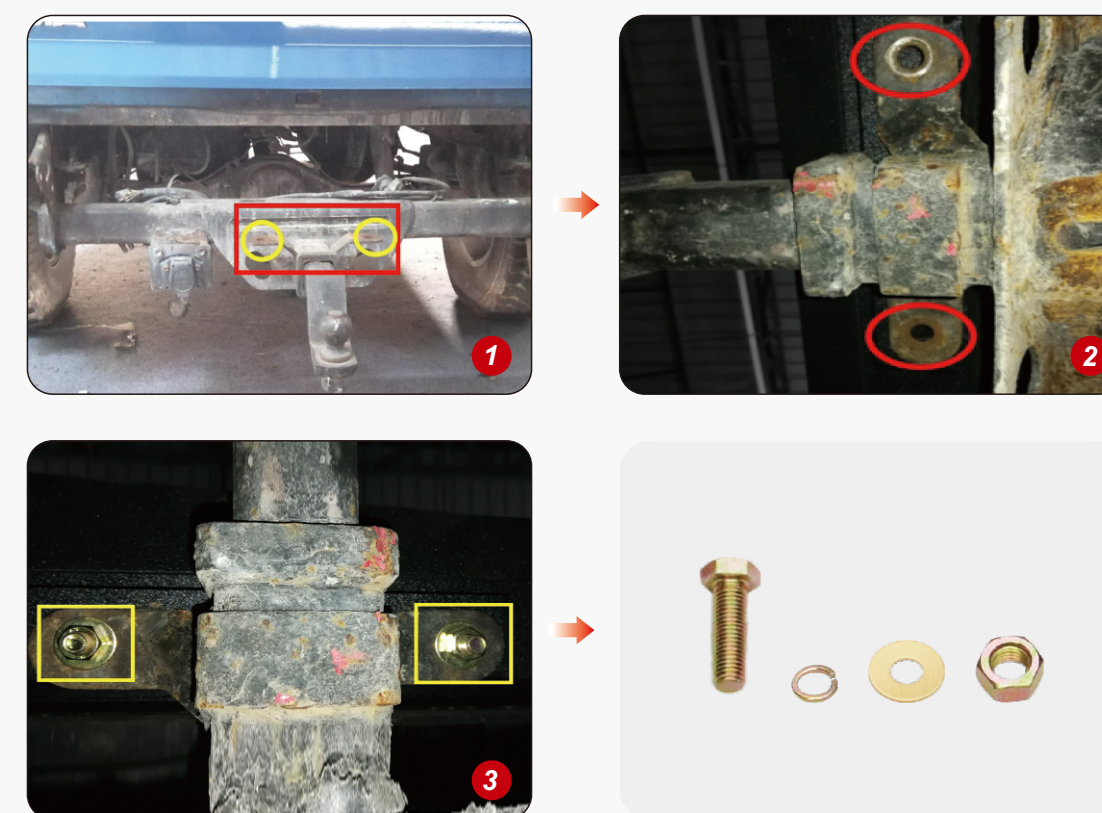
2 Step2
Install the rear bumper on the vehicle, and tighten it with 4 of PART"C", PART"D" &PART"E", and 8 of PART"F".



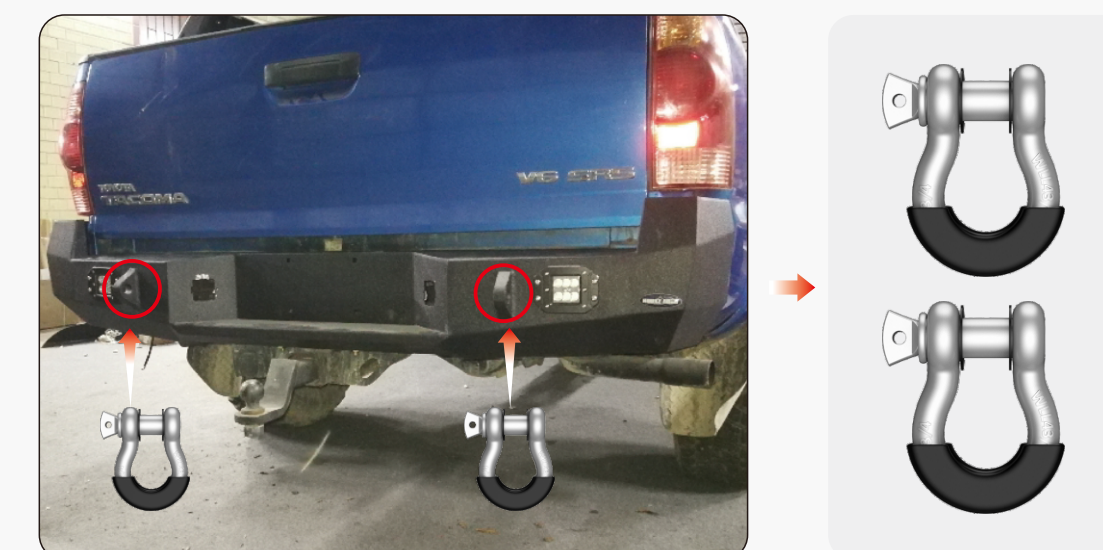
420*285mm



3 Step3
Install 2 of PART"C", PART"D" &PART"E", and 4 of PART"F" on the bottom of the rear bumper.



4 Step4
Install the PART"B" (D-rings)on the bumper.



5 Step5
Installation completed.

Enjoy Your New Nilight Bumper!

