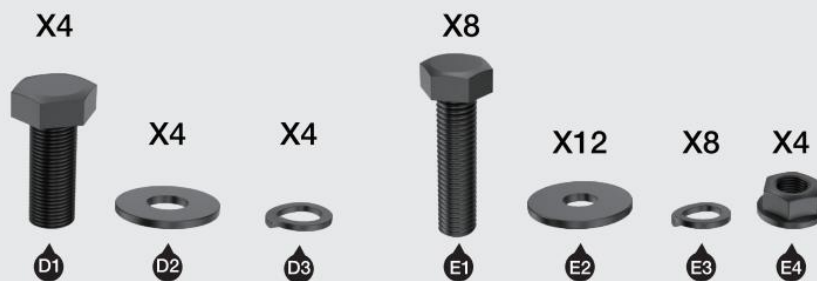
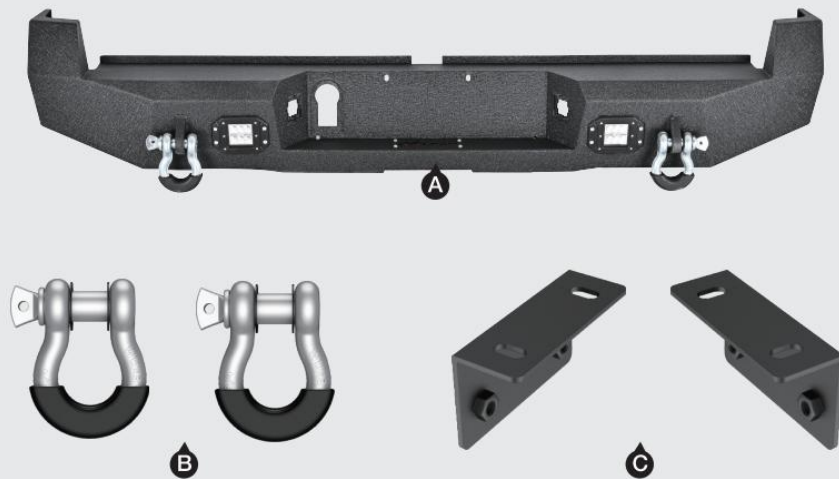




Pickup Truck Rear Bumper

For 2016-2021 Toyota Tacoma

(1)Contents:



Notes

- Read this instruction carefully before starting installation.
- Proper tools will improve the quality of installation and reduce the time required.
- Please contact us if missing parts or any damage found.

(2)Installation time: About 1 hour, 2-3 people may be needed.

Installation Instruction

- 1** Step 1
Install the PART B.

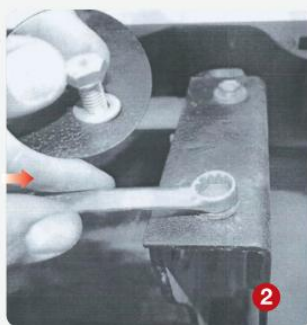


- 2** Step 2
Remove the original rear bumper.

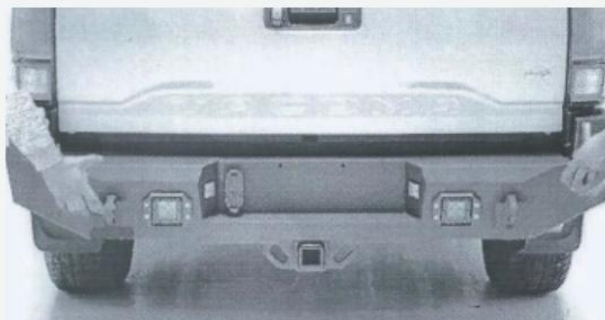


3**Step 3**

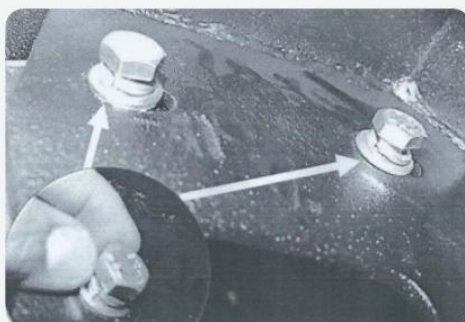
Locate and install supplied L bracket onto the vehicle hitch receiver. Hold the L mounting bracket into position, with 4 of PART E1, E2&E3.

**4****Step 4**

With help from an assistant place bumper onto vehicle. Line up the bumper mounting holes with L brackets holes.

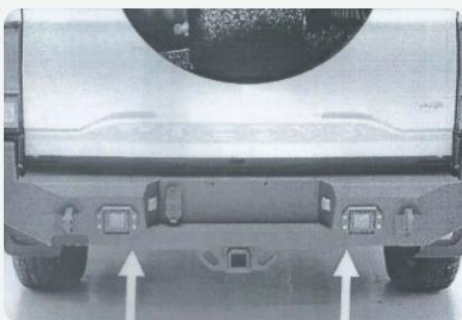
**5****Step 5**

Connect the bumper and L bracket, install with 4 of PART D1, D2&D3.



6**Step 6**

Working underneath vehicle, install supplied 4 of PART E1, E2, E3&E4, through the hole in the vehicle frame.

**7****Step 7**

Reinstall hitch harness onto bumper. Reinstall factory light markers onto bumper. Repeat for other side light marker. Reconnect license plate light harness and trailer connector hitch harness.

