

420*285MM

210x285mm

210x285mm

210x285mm

210x285mm



Pickup Truck Front Bumper

For 2007-2013 Toyota Tundra

(1)Contents:



Notes

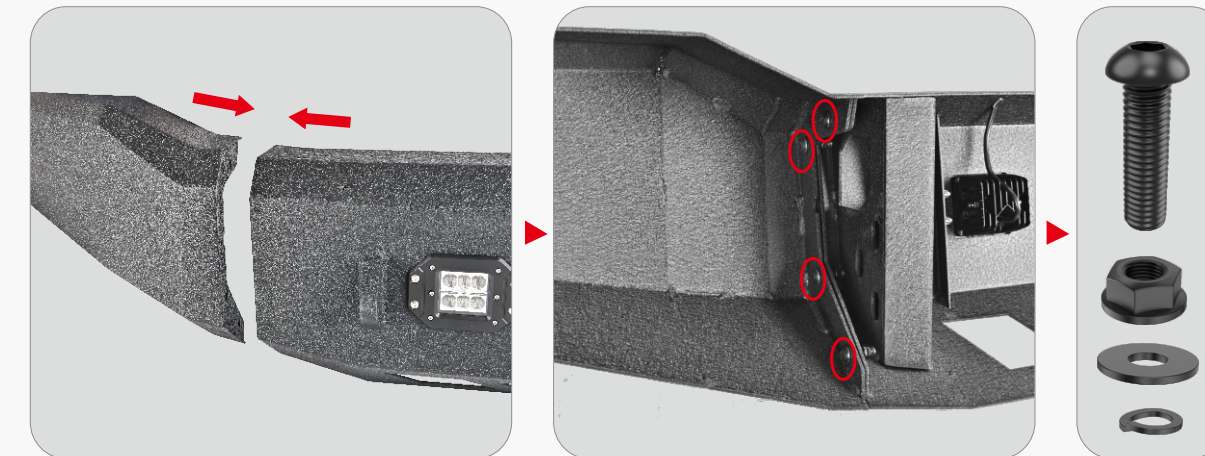
- Read this instruction carefully before starting installation.
- Proper tools will improve the quality of installation and reduce the time required.
- Please contact us if missing parts or any damage found.

(2)Installation time: About 1 hour, 2-3 people may be needed.

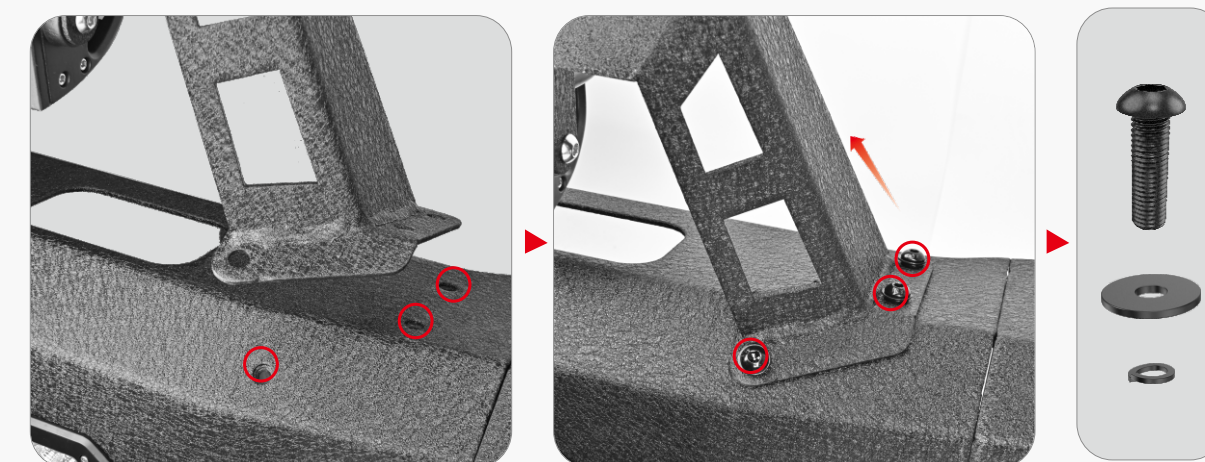
Installation Instruction

1 Step1 Assemble the bumper.

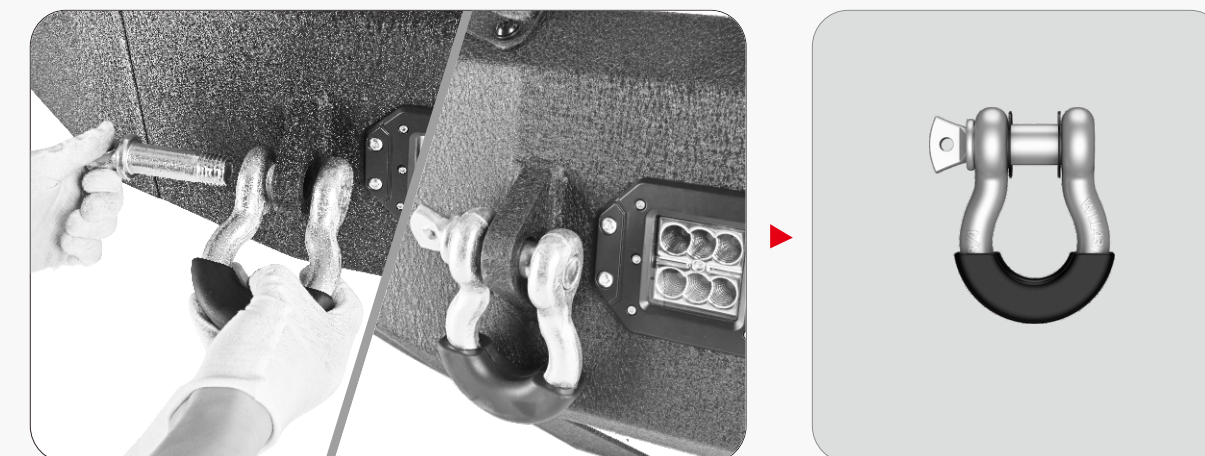
(1)Connect the PART A and B1, B2, using with 8 of PART F1,F2&F4, and 16 of PART F3.



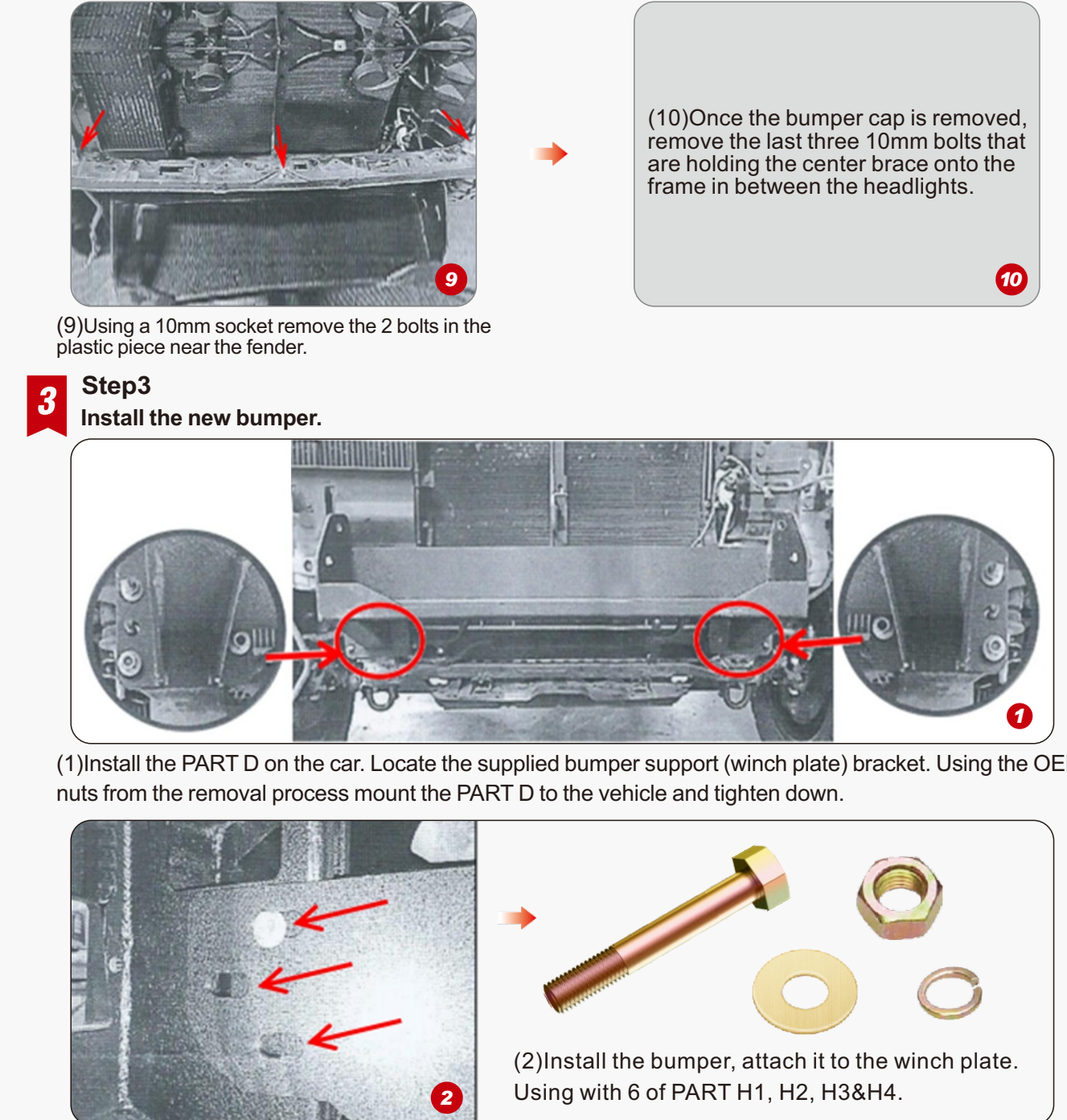
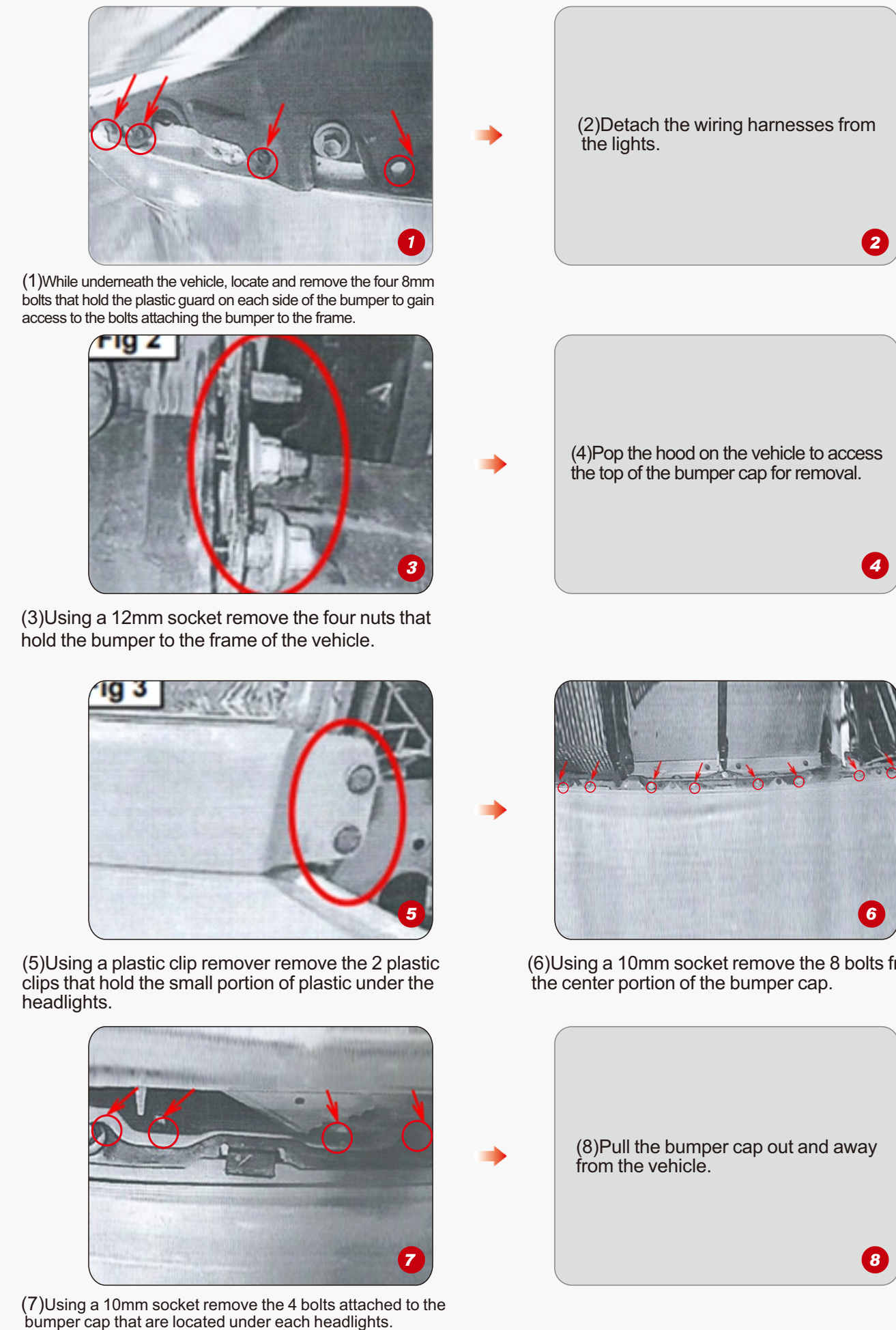
(2)Install the PART C on bumper, using with 6 of PART G1, G2 &G3.



(3)Install the PART E



2 Step2 Remove the factory OEM bumper.



Enjoy Your New Nilight Bumper!

