

420*285MM

210x285mm

210x285mm

210x285mm

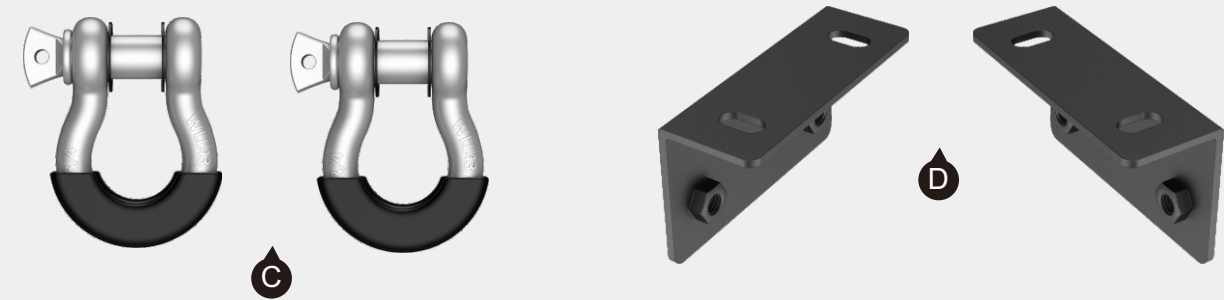
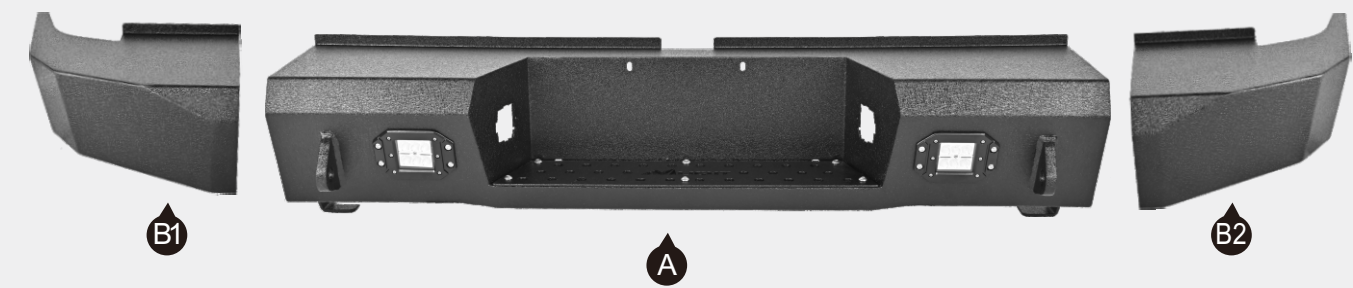
210x285mm



Pickup Truck Rear Bumper

For 2007-2013 Toyota Tundra

(1)Contents:



Notes

- Read this instruction carefully before starting installation.
- Proper tools will improve the quality of installation and reduce the time required.
- Please contact us if missing parts or any damage found.

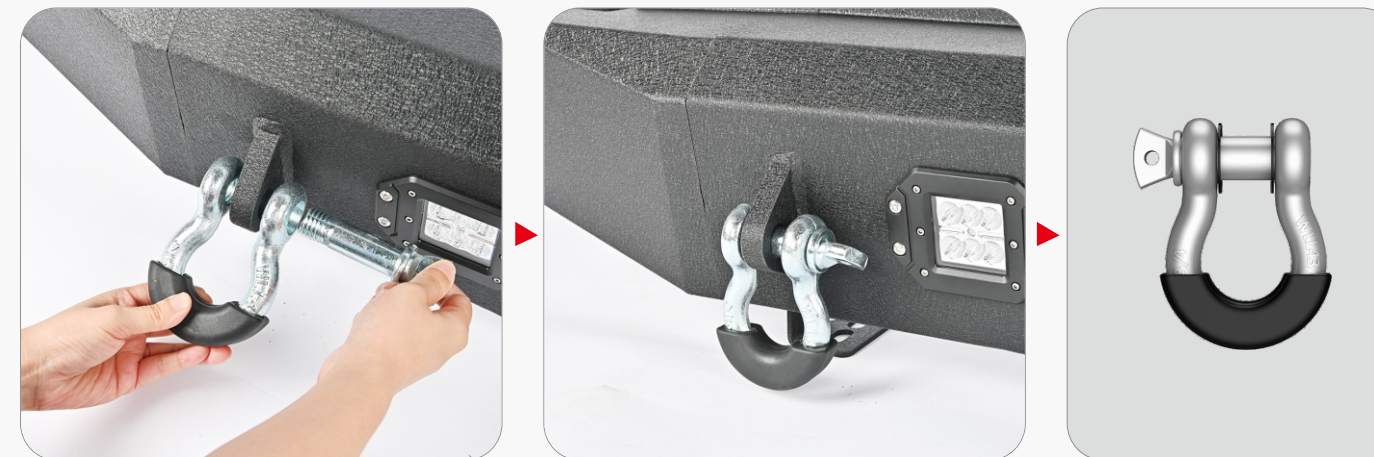
(2)Installation time: About 1 hour, 2-3 people may be needed.

Installation Instruction

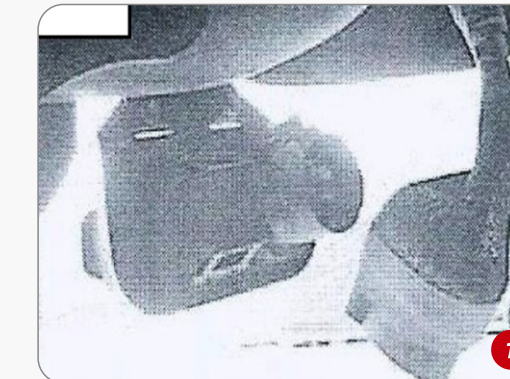
- 1 Step1**
Assemble the bumper.
(1)Connect the PART B1, B2 and A, with 6 of E2, E3&E5, 12 of E4.



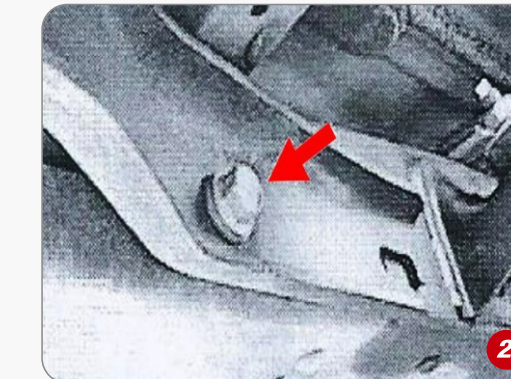
- (2)Install the PART C.



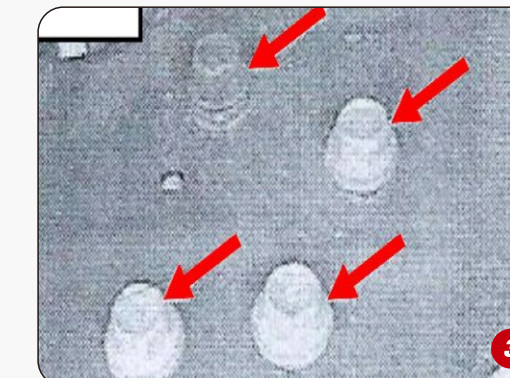
- 2 Step2**
Remove the factory rear bumper



- (1)Locate and remove the wiring harness connected to the lights and the tow hitch receiver

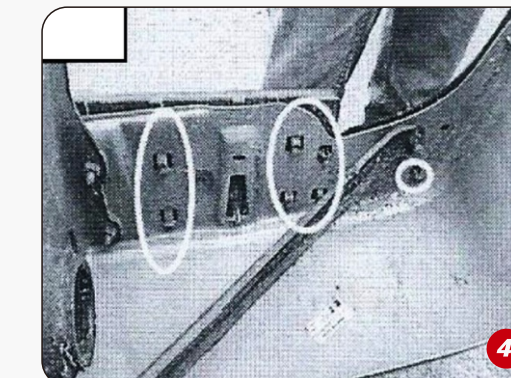


- (2)Locate and remove the single 16mm bolt attaching the rear of the tow hitch to the frame of the vehicle



- (3)Locate and remove the four 16 bolts towards the front of the tow hitch.

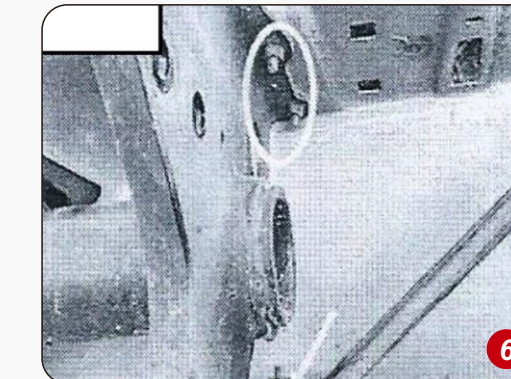
NOTE: The removal of these bolts will allow the bumper to fall. Make sure there is sufficient support for the bumper and the hitch.



- (4)Place bumper with tow hitch onto work bench and remove license plate frame

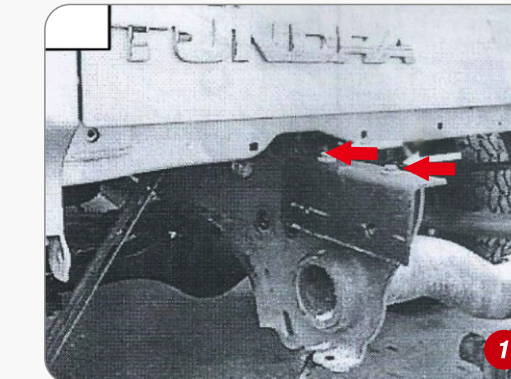


- (5)Unclip plastic clips that are holding the plastic step to the top of the bumper.



- (6)Remove the three 12mm bolts that attach the bumper to the tow hitch.

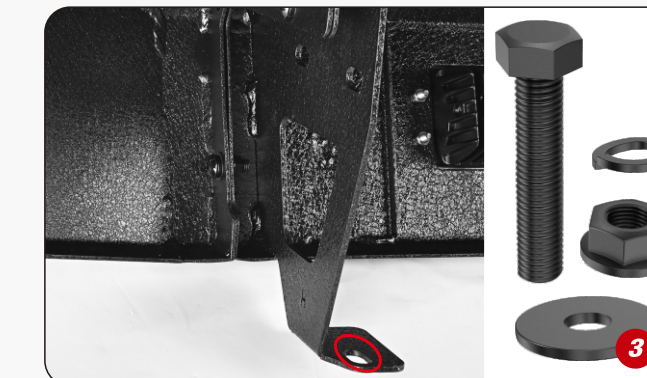
- 3 Step3**
Install the new rear bumper.



- (1)Attach L-Brackets to top of tow hitch, using with 4 of F1, F2&F3.



- (2)Attach the new bumper, using with 4 of E1, E3&E4



- (3)Fix bumper, using with 2 of F1, F2, F4& 8 of F3.



- (4)Reattach tow hitch receiver harness and license plate lights.

Enjoy Your New Nilight Bumper!

