

420*285MM

210x285mm

210x285mm

210x285mm

210x285mm



Pickup Truck Front Bumper

For 2014-2020 Toyota Tundra

(1)Contents:



Notes

- Read this instruction carefully before starting installation.
- Proper tools will improve the quality of installation and reduce the time required.
- Please contact us if missing parts or any damage found.

(2)Installation time: About 1 hour, 2-3 people may be needed.

Installation Instruction

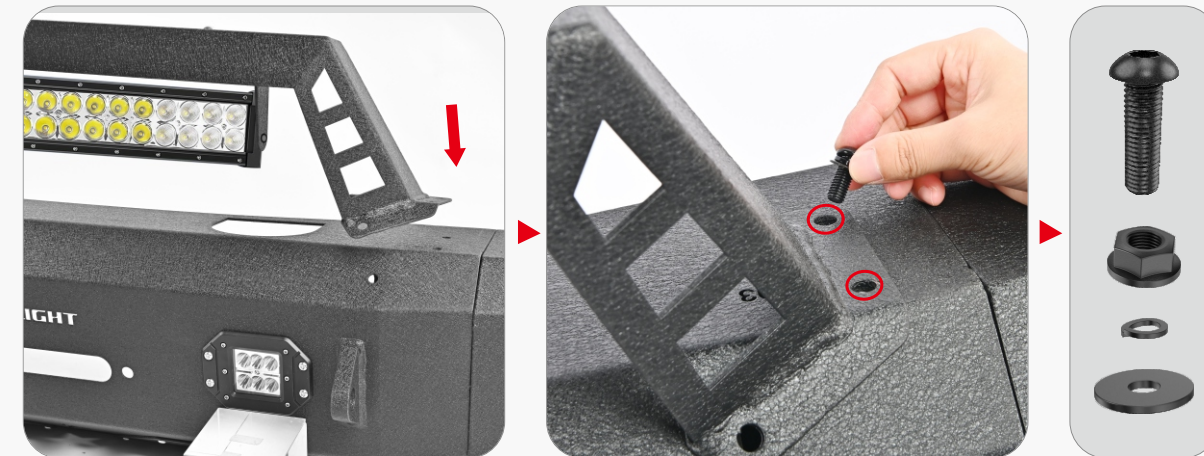
1

Step1
Assemble the bumper.

(1)Connect the PART B1, B2 and A, with 8 of F1, F2&F3, and 16 of F4.



(2)Install the PART C, with 6 of G1, G2, G3&G4.

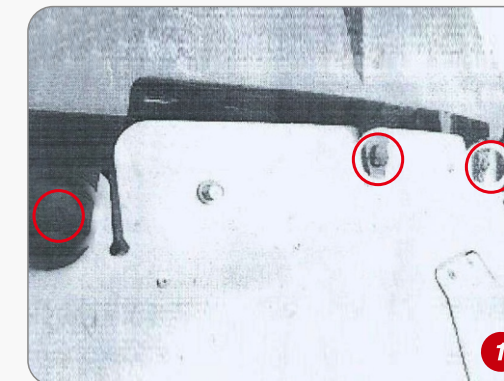


(3)Install the PART E

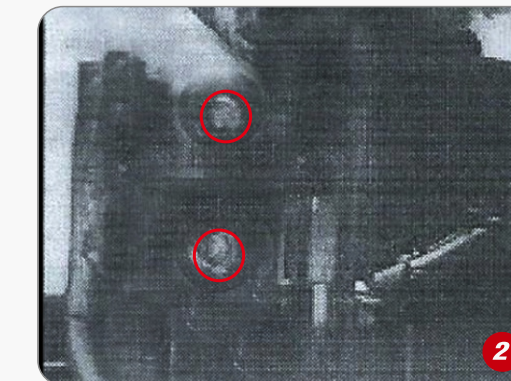


2

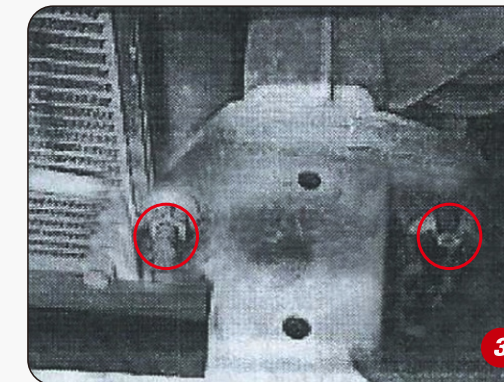
Step2
Remove the factory OEM bumper.



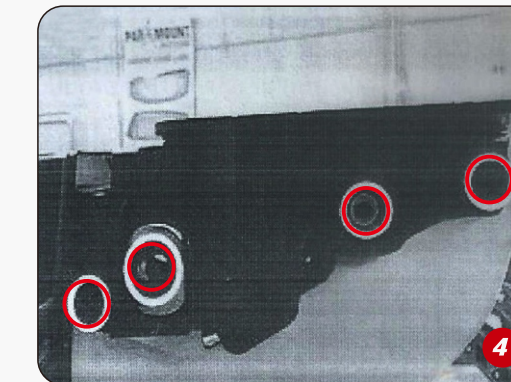
(1)Locate and remove 3 plastic clips from skid plate under vehicle



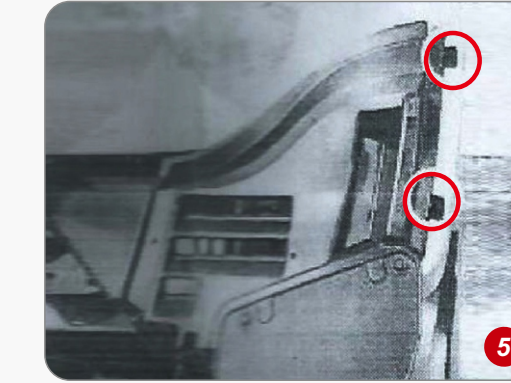
(2)Remove two 17mm bolts that are holding the OEM tow hooks on.(both sides)



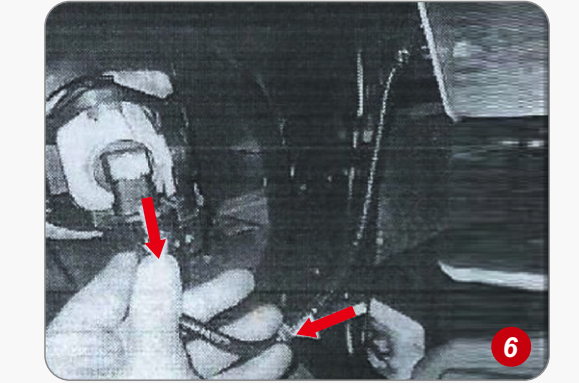
(3)Remove four 14mm nuts holding the OEM bumper to the frame.(both sides)



(4)Remove plastic clips and bolts underneath the bumper attached to the mudguard



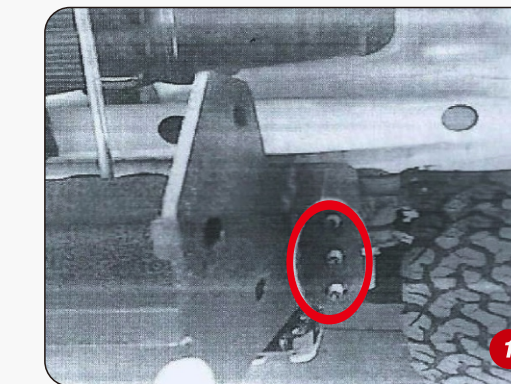
(5)Remove 2 bolts on the side of the mudguard.



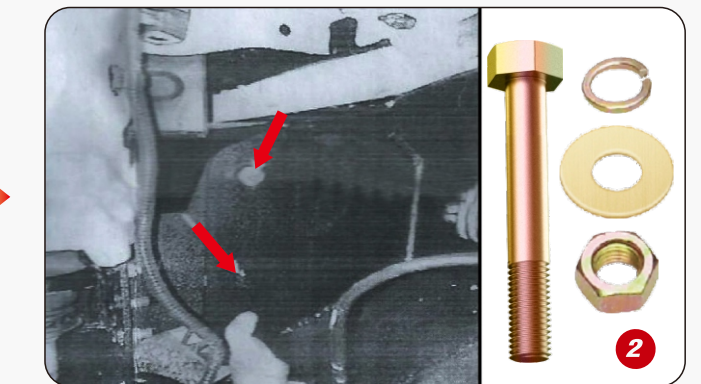
(6)Pull the mudguard away from the bumper, disconnect the fog lights, and pry the clip off the bumper. Once all nuts are removed and the fog lights are disconnected pull bumper forward and down.

3

Step3
Install the bumper on your car.



(1)Locate the PART D and place on vehicle frame. Line up the holes in PART D with bolts from frame and using OEM hardware attach bracket.



(2)Mount the new bumper onto the PART D, using provided hardware H1, H2, H3&H4.

Enjoy Your New Nilight Bumper!

