



Off Road Front Bumper

For 1999-2004 Jeep Grand Cherokee WJ

Tools Required:

- 18mm socket
- 16mm socket
- 10mm socket
- Ratchet
- Plastic removal tool
- 2 Philip's head screw driver

(1)Contents:



G1.M12*35 hex head bolt×18 G2.M12 hex head nut×18 G3.M12*30 flat washer×36 G4.M12 split washer×18

H1.M8*20 hex head bolt×6 H2.M8 hex head nut×6 H3.M8*16 flat washer×12 H4.M8 split washer×6

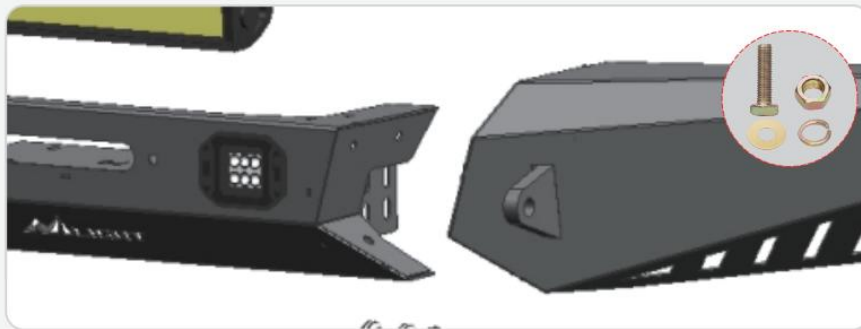
Notes

- The product parts in this instruction may differ slightly from the actual product contents but generally does not affect the installation of the product.
- Read this instruction carefully before starting installation.
- Proper tools will improve the quality of installation and reduce the time required.
- Please contact us if missing parts or any damage found.
- Installation takes approximately one hour, 2-3 people may be needed.

Installation Instruction:

1 Assemble the Bumper.

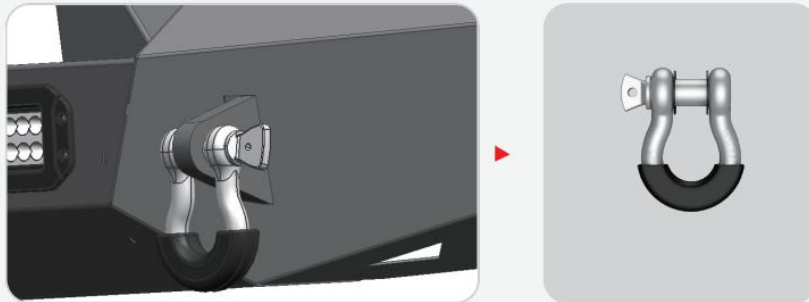
(1) Connect the part B1, B2 and A with 6 of G1 & G2 & G4, and 12 of G3.



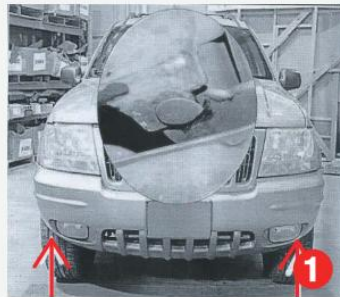
(2) Install the part E with 4 of H1 & H2 & H4, and 8 of H3.



(3) Install the part F.

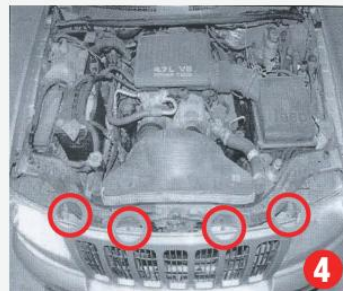


2 Factory Bumper Removal



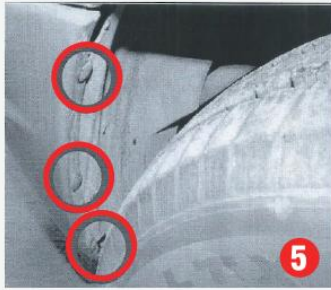
(1) Using a plastic removal tool locate and remove 1 factory clip holding the inner liner onto the factory bumper. Repeat step for other side.

(2) Locate and disconnect the wiring harness plug.



(3) Using a #2 Philips head screw driver locate and remove 3 factory screws holding the factory grille onto vehicle.

(4) Using a #2 Philips head screw driver locate and remove 4 factory screws holding the factory grille onto vehicle.



- (5) Looking inside the vehicle wheel well locate and remove 3 factory clips holding the bumper onto the vehicle using a plastic removal tool. Repeat step for other side.



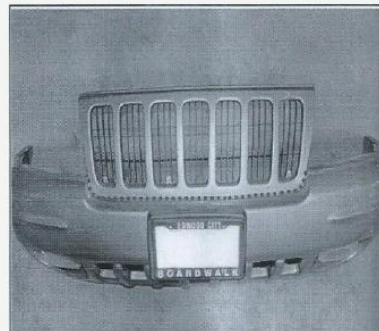
- (6) Using a 10mm socket locate and remove 1 factory hex head bolt holding the bumper onto the vehicle. Repeat step for other side.

- (7) Firmly pull on the corner of the vehicle bumper working your way up until the vehicle head light. With help from assistant remove factory bumper from vehicle Set factory bumper aside in a protected area.



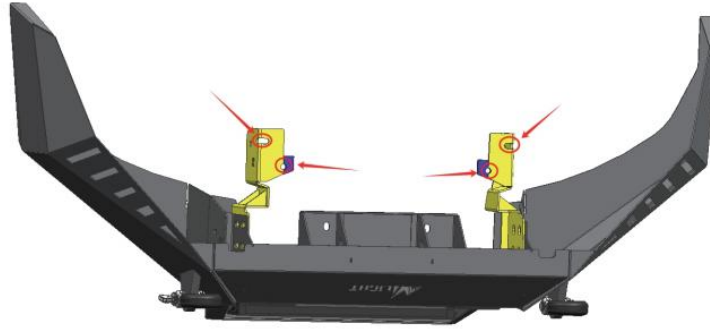
3 Cutting Factory Bumper

- (1) Some WJ models the grille is attached to the bumper. You will need to cut the grille off the factory bumper as shown above. Using the dotted lines above as a guide to cut, using a cut off wheel cut the grille off the factory bumper.

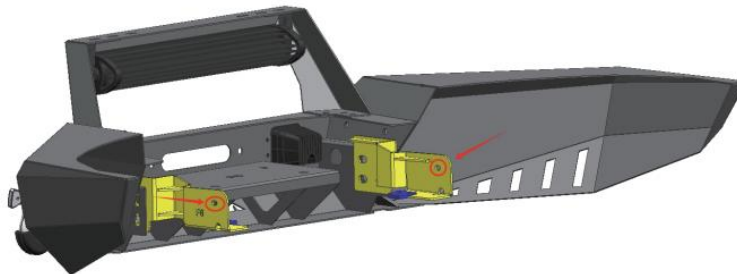


4 Installing Mounting Bracket

- (1) Line up the holes in the mounting bracket (C) with the holes in the vehicle. Place supplied M12*35 hex head bolt (G1) with M12 flat washer (G3) through the hole in the mounting bracket and through the hole in the vehicle frame. Place a M12 flat washer and a M12 split washer (G4) at the end of bolt. Start a supplied rubber Pad (D) and M12 hex head nut (G2) at the end of bolt. Tighten down bolt using a 18mm socket. Repeat step for remaining bolt. Repeat step for other side mounting bracket.



- (2) Place supplied M8*20 hex head bolt (H1) with M8*16 flat washer (H3) through the hole in the side of the bracket. Place a M8 flat washer (H3) and a M8 split washer (H4) at the end of bolt. Start a supplied M8 hex head nut (H2) at the end of bolt. Tighten down using a socket. Repeat step for remaining bolt.



5 Installing New Bumper

- (1) Line up the holes in the new bumper with the holes in mounting bracket. Place a supplied M12*35 hex head bolt (G1) with M12 flat washer (G3) through the hole in the mounting bracket and through the hole in the bumper. Place a supplied M12 flat washer and M12 split washer (G4) at the end of bolt. Start a supplied M12 hex head nut (G2) at the end of bolt. Tighten down bolt using a 18mm socket. Repeat step for remaining bolt.



- (2) Reinstall factory grille back onto vehicle. Proceed to make electrical connections for the LED lights. If you are not qualified to make the proper connections, we highly recommend that you contact an installation expert to complete the connections.

Enjoy Your New Nilight Bumper!



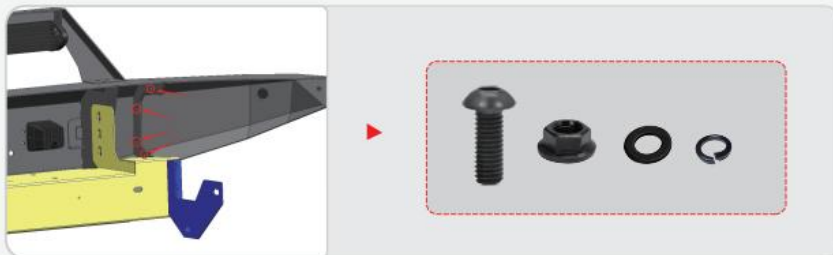
Notes

- The product parts in this instruction may differ slightly from the actual product contents but generally does not affect the installation of the product.
- Read this instruction carefully before starting installation.
- Proper tools will improve the quality of installation and reduce the time required.
- Please contact us if missing parts or any damage found.
- Installation takes approximately one hour, 2-3 people may be needed.

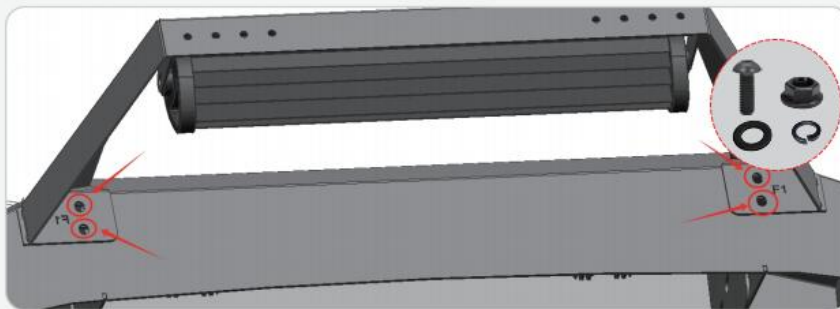
Installation Instruction:

1 Assemble the Bumper.

(1) Connect the part B1, B2 and A with 8 of H1 & H2 & H4, and 16 of H3.



(2) Install the part F with 4 of H1 & H2 & H4, and 8 of H3.



(3) Install the part G.



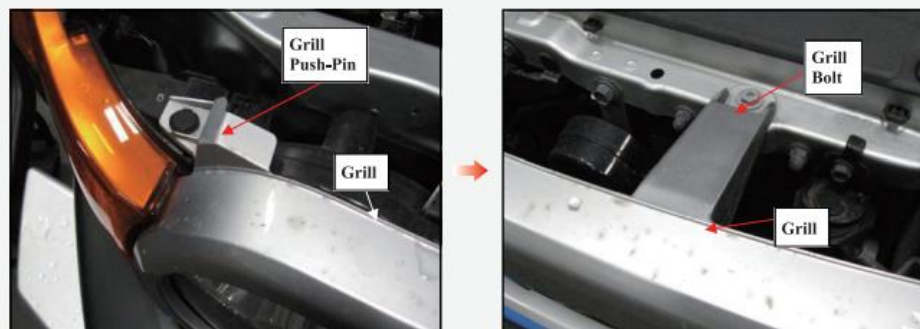
2 Factory Bumper Removal

- (1) Remove the license plate from the bumper and unplug the wiring harness for the fog lights at the main connector.
- (2) Remove the 2 factory fasteners from the lower front of the plastic inner fender wells and the 4 factory fasteners on the bottom side of the bumper.

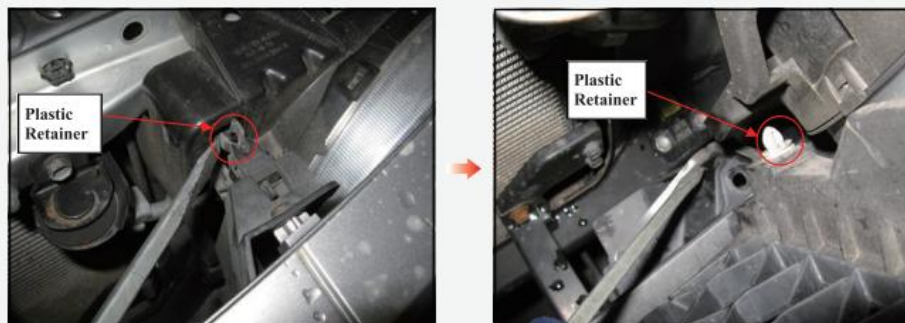


2

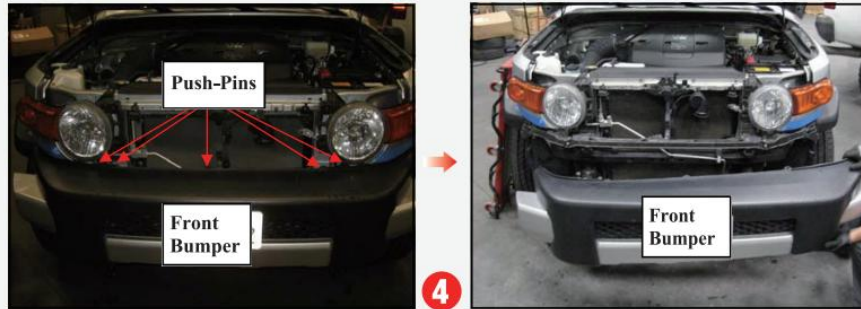
- (3) Start by removing the 4 factory fasteners (2 push-pins and 2 bolts) from the top of the grill. Carefully release the factory plastic retainers and remove the grill.



3



(4) Remove the 5 factory plastic push-pins from the bumper. Unclip the factory front bumper and carefully remove the bumper from the vehicle. Save hardware for later use.

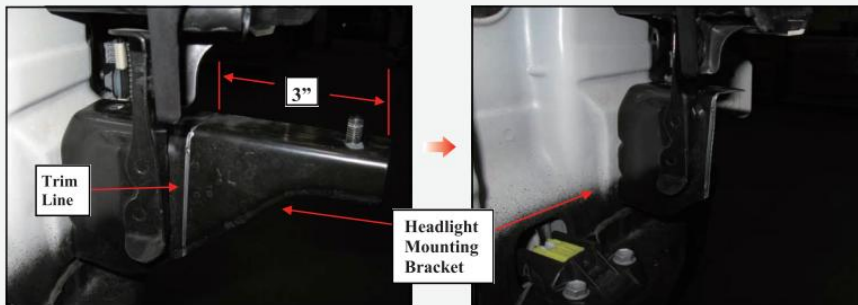


(5) Unbolt the (4 per side) factory retaining nuts. Remove the crash guard and upper bumper shell frame. Save the factory nuts for later use.



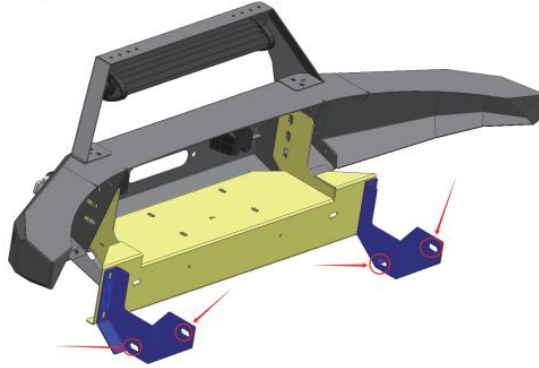
3 Cutting Factory Bumper

(1) Some newer model vehicles will need to have the headlight mounting bracket trimmed before installing the new bumper. Measure in 3" from the edge of the bracket and scribe a line. Using a suitable cutting tool, (abrasive cutoff wheel, Sawz-all, etc.) trim the headlight bracket.



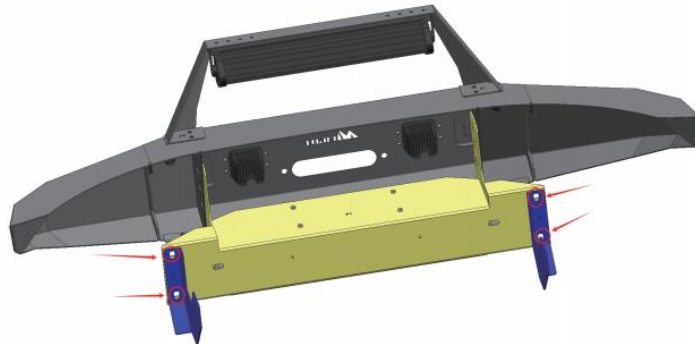
4 Installing Mounting Bracket

- (1) Line up the holes in the mounting bracket (D) with the holes in the vehicle. Place supplied M10*70 hex head bolt (J1) with M10 flat washer (J3) through the hole in the mounting bracket and through the hole in the vehicle frame. Place a M10 flat washer and a M10 split washer (J4) at the end of bolt. Start a supplied M10 hex head nut (J2) at the end of bolt. Tighten down bolt. Repeat step for other side mounting bracket.



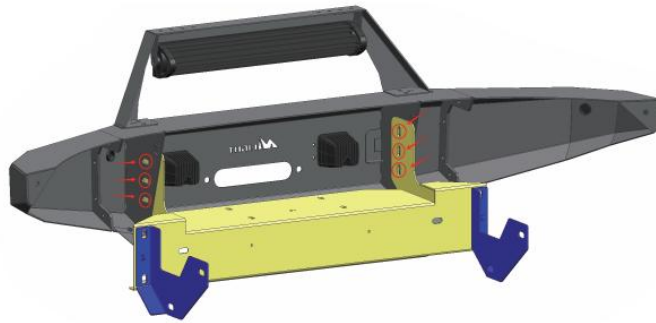
- (2) Line up the holes in the winch mounting plate (E) with the holes in the mounting bracket (D). Place supplied M12*35 hex head bolt (I1) with M12 flat washer (I3) through the hole in the mounting bracket (D). Place a M12 flat washer and a M12 split washer (I4) at the end of bolt. Start a supplied M12 hex head nut (I2) at the end of bolt. Tighten down bolt. Repeat step for remaining bolt.

Note: If you are installing a winch, do so at this time.

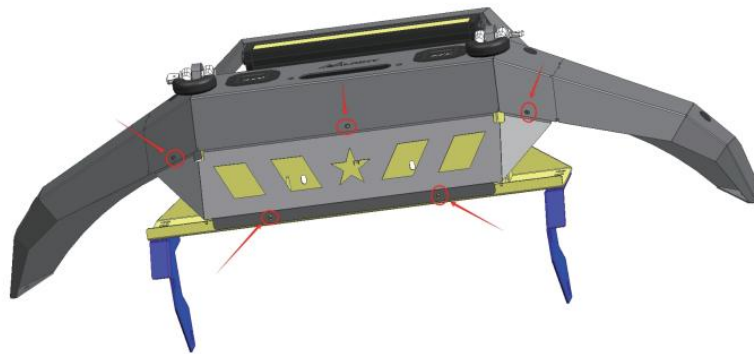


5 Installing New Bumper

- (1) Line up the holes in the bumper with the holes in winch mounting plate. Place a supplied M12*35 hex head bolt (I1) with M12 flat washer (I3) through the hole in the winch mounting plate and through the hole in the bumper. Place a supplied M12 flat washer and M12 split washer (I4) at the end of bolt. Start a supplied M12 hex head nut (I2) at the end of bolt. Tighten down bolt. Repeat step for remaining bolt.



- (2) Line up the holes in bumper guard with the holes in winch mounting plate and bumper. Place a supplied M6*20 hexagon bolt (K1) with M6 flat washer (K2) through the hole in the bumper guard and through the hole in the bumper. Place a supplied M6 split washer (K3) at the end of bolt. Tighten down bolt. Repeat step for remaining bolt.



- (3) Proceed to make electrical connections for the LED lights. If you are not qualified to make the proper connections, we highly recommend that you contact an installation expert to complete the connections.

Enjoy Your New Nilight Bumper!

