

# 420\*285MM 可印刷三折页样式

210x285mm



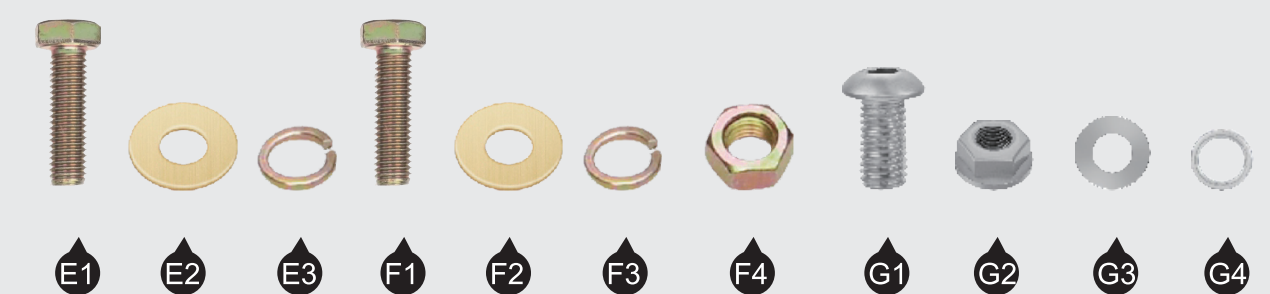
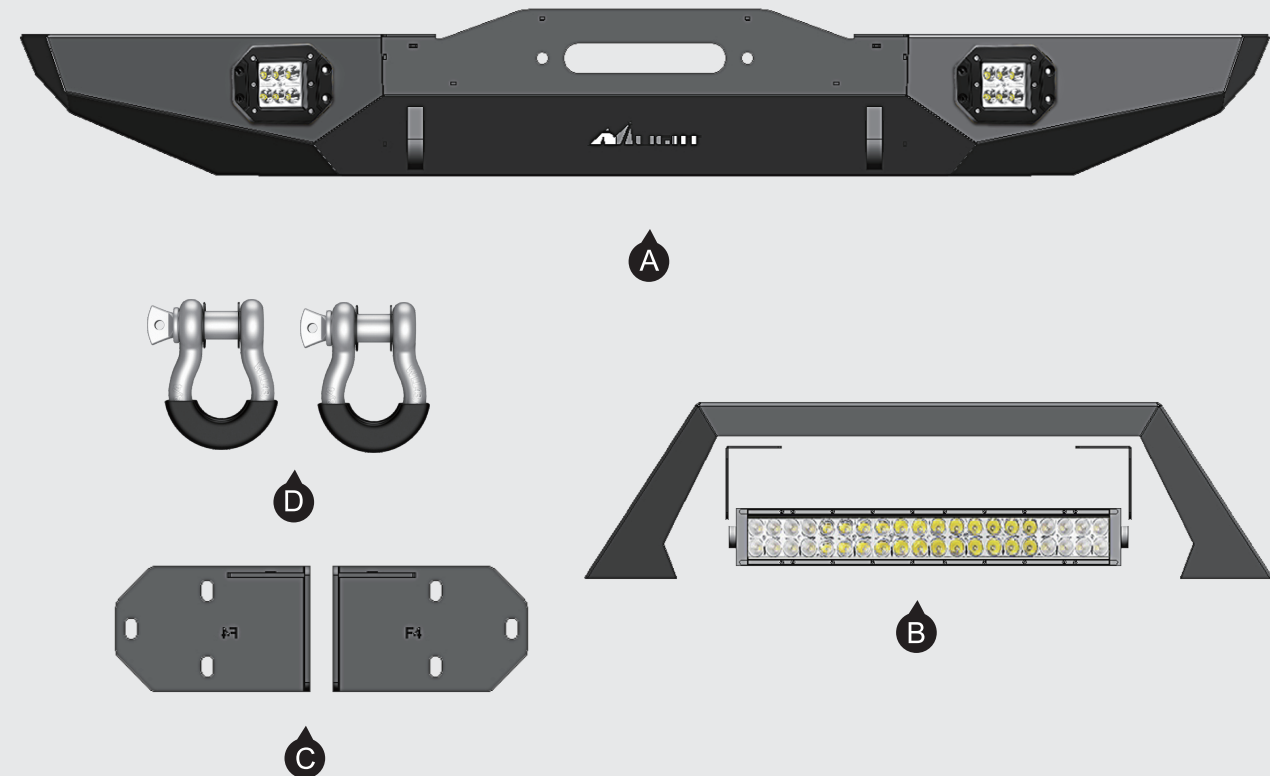
## Off Road Front Bumper

For 1984-2001 Jeep Cherokee XJ

### Tools Required:

- 10mm socket
- 18mm socket
- 15mm socket
- 16mm socket
- Ratchet

### (1)Contents:



E1.M12\*30 hex head bolt×8 E2.M12\*30 flat washer×8 E3.M12 split washer×8

F1.M10\*35 hex head bolt×6 F2.M10 hex head nut×6 F3.M10\*25 flat washer×12 F4.M10 split washer×6

G1.M8\*20 allen hex bolt×4 G2.M8 flange nut×4 G3.M8\*16 flat washer×8 G4.M8 split washer×4

210x285mm

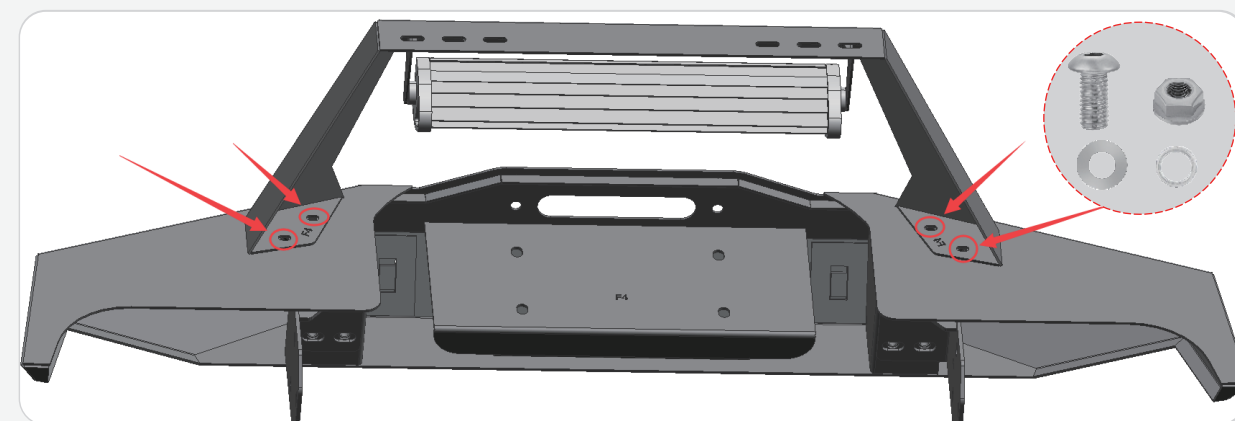
### Notes

- The product parts in this instruction may differ slightly from the actual product contents but generally does not affect the installation of the product.
- Read this instruction carefully before starting installation.
- Proper tools will improve the quality of installation and reduce the time required.
- Please contact us if missing parts or any damage found.
- Installation takes approximately one hour, 2-3 people may be needed.

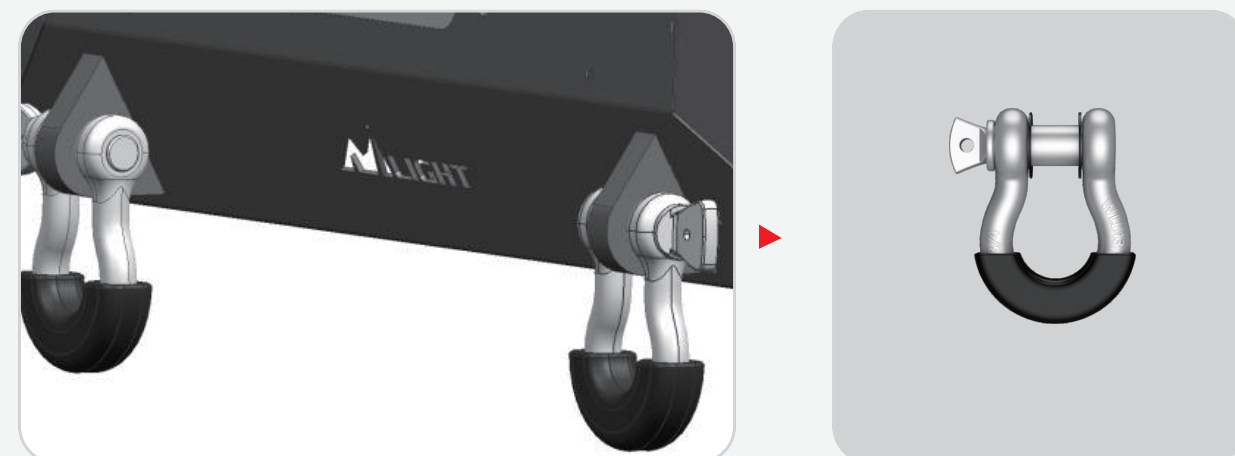
### Installation Instruction:

#### 1 Assemble the Bumper.

(1) Install the part B with 4 of G1 & G2 & G4, and 8 of G3.



(2) Install the part D.



#### 2 Factory Bumper Removal



(1) Locate and remove 2 factory screws holding the factory vacuum canister onto factory bumper.

(2) Using a socket locate and remove 3 factory bolts on each side of the bumper holding the factory bumper onto vehicle.

210x285mm



(3)With help form an assistant remove factory bumper from vehicle.



(5) In order to facilitate product installation and product better fit. Remove the original front baffle. Cut off the excess on both sides. As the picture shown. (Note: Only 96 and earlier require fender trimming)

(6) Place vacuum canister onto vehicle as shown. Secure into place using 2 sheet metal screws not supplied. Reconnect vacuum line back onto vacuum canister.



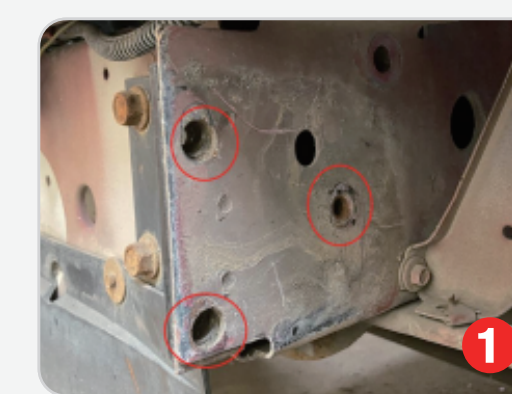
(4) Remove vacuum canister from bumper and set it aside for later use.



#### 3 Installing Mounting Bracket

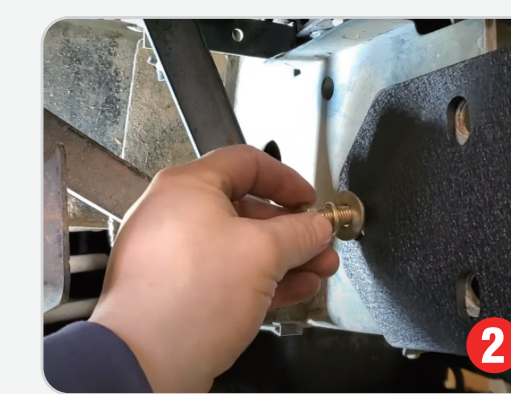
(1) Place a supplied M10\*35 hex head bolt (F1) with M10 split washer (F4) and M10\*25 flat washer (F3) through the hole of the mounting bracket and onto vehicle frame. Tighten up all of those bolts.

210x285mm



#### 4 Installing the new bumper

(1) With help form an assistant place supplied bumper onto vehicle. Install the part"A"with M12\*30 hex head bolt (E1), M12 split washer (E2), M12\*30 flat washer (E3).



(2)Proceed to make electrical connections for the LED lights. If you are not qualified to make the proper connections, we highly recommend that you contact an installation expert to complete the connections.

### Enjoy Your New Nilight Bumper!

