



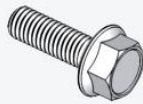
Slip-Proof Running Boards

- For 2007-2018 Chevrolet Silverado 1500 Crew Cab
- For 2007-2019 Chevrolet Silverado 2500HD 3500HD Crew Cab
- For 2007-2019 GMC Sierra 2500HD 3500HD Crew Cab
- For 2007-2018 GMC Sierra 1500 Crew Cab

Tools Required



A
X8



B
X16



C
X16



D
X8



E
X8



F
X16



G
X16

A.X8 Mounting Bracket
B.X16 M8 Hexagon Flange Bolt
C.X16 M8 Flat Washer

D.X8 M8 Hexagon Flange Nut
E.X8 Clip Nut (Pre-Install on Step Bar)
F.X16 M8 Hexagon Flange Bolt
G.X16 M8 Flat Washer

Notes

- Read this instruction carefully before starting installation.
- Verify the direction of brackets before starting installation.
- Proper tools will improve the quality of installation and reduce the time required.
- If missing parts or any damage found, please take a picture and contact us.
- Does Not compatible with diesel engine vehicle.

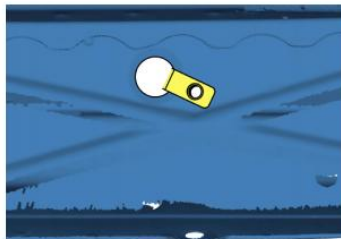
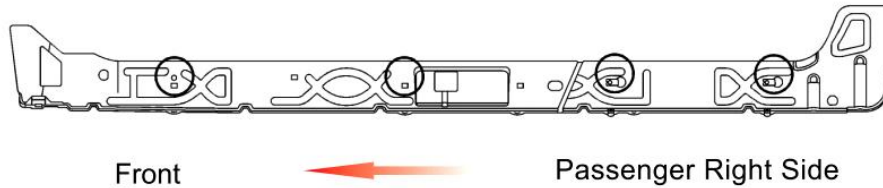
Installation Instruction

1 Step1

- (1) Locate (4) mounting positions each side.
- (2) Remove rubber plugs on inner rocker panel.
- (3) Insert clip nuts onto existing threaded inserts in rocker panel, use them directly in the step.

Note:

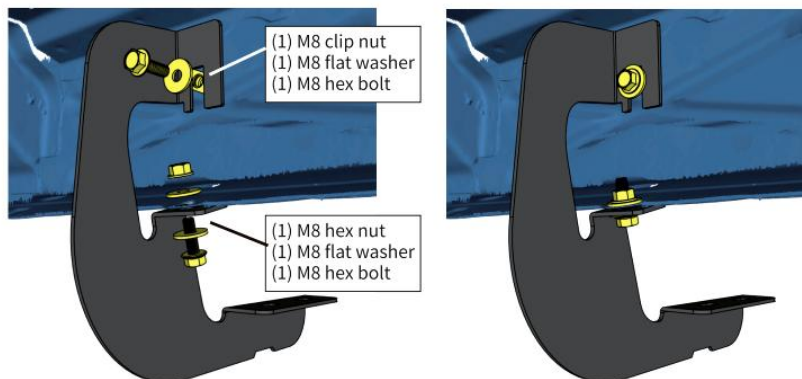
Some vehicles may equipped threaded inserts in rocker panel, use them directly in the step 2.



Insert M8 clip nuts onto the large hole and over the smaller hole next to it, with threads inside of the inner rocker panel.

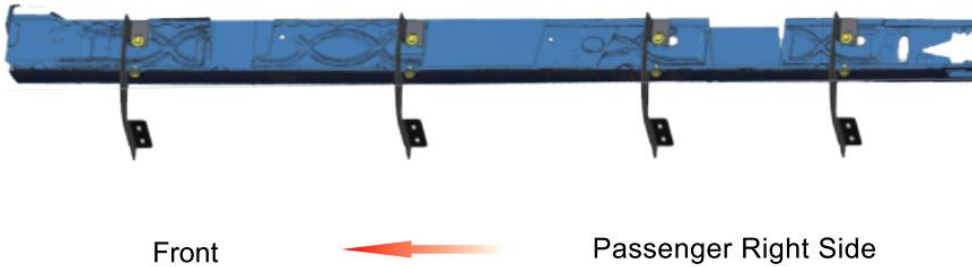
2 Step2

- (1) Attach the bracket to the inner rocker panel and secure with (1) M8 hex bolt, (1) M8 flat washer.
- (2) Secure the bracket to pinch weld with (1) M8 hex bolt, (1) M8 flat washer, (1) M8 hex nut.
- (3) Repeat to install remaining brackets, do not fully tighten.

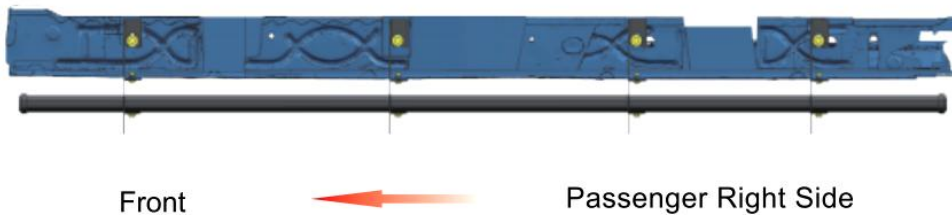
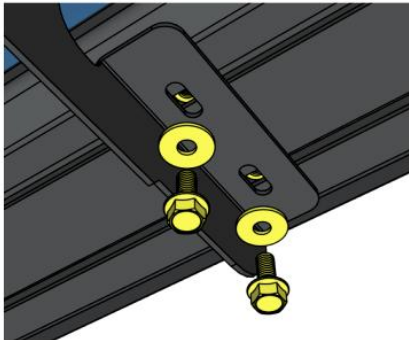


Note:

For vehicle with factory threaded inserts and weld nuts, clean the rust and dirt around the threads before installation. Proper lubrication is required.

**3****Step3**

- (1) Remove (8) M8 hex bolts and (8) M8 flat washer from the step bar.
- (2) Slide mounting tracks to proper positions.
- (3) With assistance, lift and attach the step bar to brackets. Secure the step bar on brackets with (8) M8 hex bolts and (8) M8 flat washers.
- (4) Repeat to install the other side step bar, do not fully tighten.

**4****Step4**

- (1) Tighten M8 hex bolts and nuts on vehicle with 15 ft-lbs. torque.
- (2) Adjust the step bar to level and tighten M8 hex bolts with 15 ft-lbs. torque.
- (3) After the step bar installed, periodic check to ensure all mounting hardware remains secure and tight.